

Submittal Data

PROJECT:	UNIT TAG:	QUANTITY:
REPRESENTATIVE: _____	TYPE OF SERVICE:	DATE: _____
ENGINEER:	SUBMITTED BY:	DATE:
CONTRACTOR:	APPROVED BY:	DATE:
	ORDER NO.:	DATE:

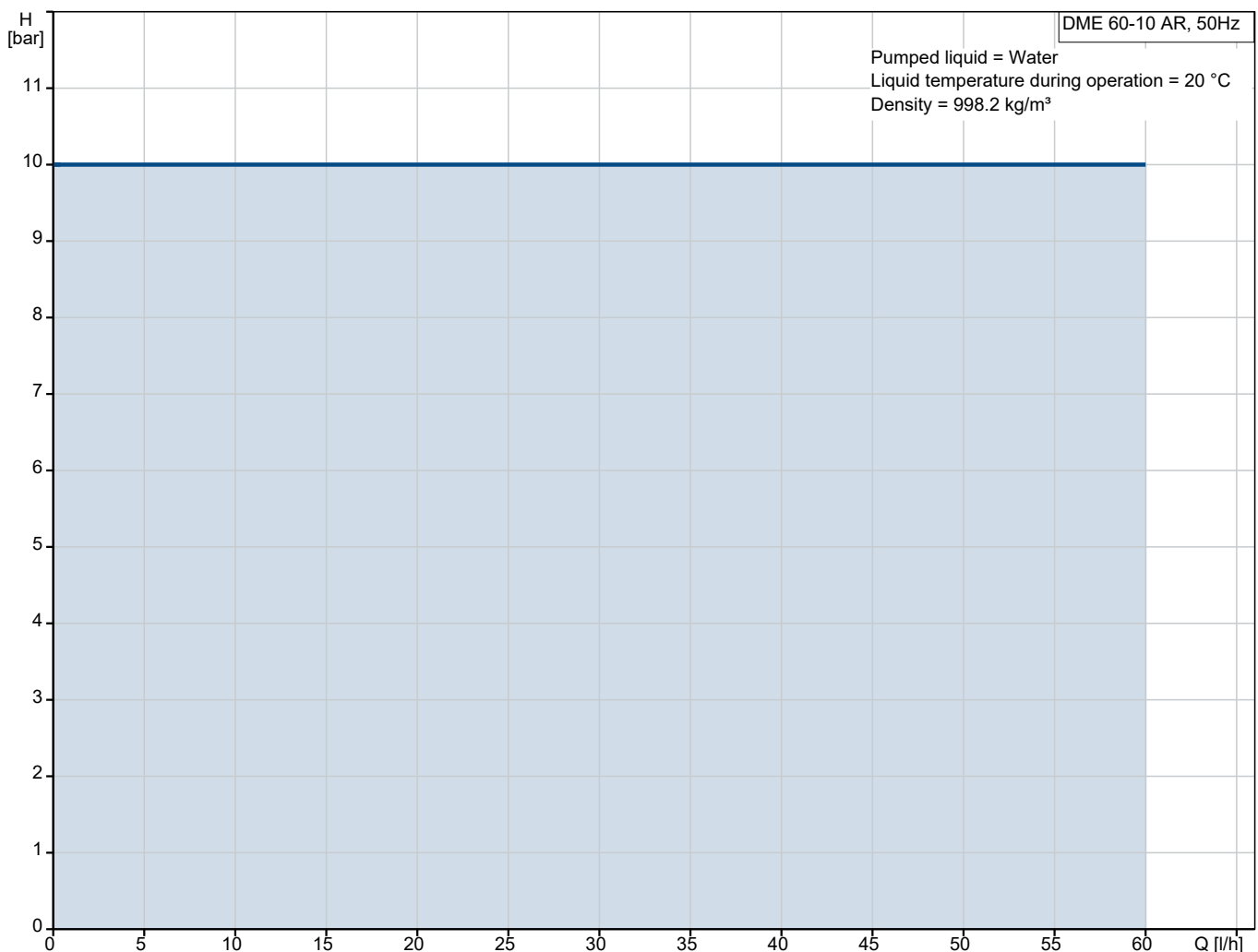


DME 60-10 AR

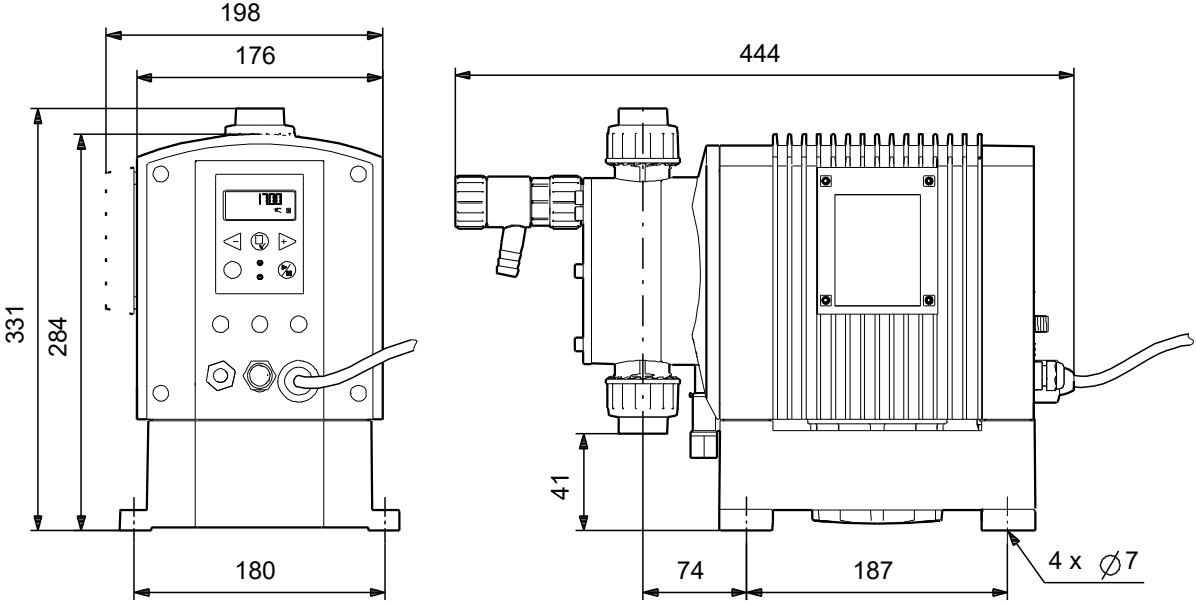
Digital diaphragm dosing pumps with internal step motor drive

Note! Product picture may differ from actual product

Conditions of Service	Pump Data	Motor Data
Liquid: Water	Maximum operating pressure: 10 bar	Rated voltage: 100-240 V
Temperature: 20 °C	Approvals: CE, EAC	Mains frequency: 50 Hz
Specific Gravity: 1.000	Product number: On request	



Submittal Data



Materials:
Pump housing: Stainless steel 1.4401
Valve ball: Stainless steel 1.4401
Gasket: FKM

Qty. Description

1 DME 60-10 AR



Note! Product picture may differ from actual product

Product No.: On request

Compact positive displacement diaphragm dosing pump, with integrated variable speed motor drive, in an IP 65 plastic enclosure.

The pump is designed for optimum user-friendliness, accuracy and reliability and is equipped with a logical control panel with one-touch buttons and a multi-language backlight display.

The capacity to be dosed in each function is set directly in l, ml or USgal per hour.

For enhanced accuracy, the pump can be calibrated to the actual installation by means of a simple calibration function.

The turndown ratio is 1 to 800 with the same accuracy and uniform dosage with reduced pulsation throughout the capacity range.

The pump is also equipped with a maximum capacity function (100%)

that allows the pump to work for a preset time at maximum capacity for priming or ordinary maintenance without changing pump settings.

The liquid end is composed of:

- pump head
- PTFE-coated diaphragm
- ball valves
- manual bleed valve

Possible operating modes:

- Manual dosing with direct setting in ml/hour, l/hour or USgal/hour
- External pulse control from external controller or water meter with direct setting in ml/pulse
- External analog 4-20, 20-4, 0-20 and 20-0 mA control with possibility to adjust the pump capacity at maximum signal.

- Timer-based batch function (internal timer).
- Pulse-based batch function (external pulse).

Other features:

- On-site calibration function for calibrating the pump to the actual installation.
- Anti-cavitation function for high-viscosity, gassing liquids or long suction lines.
- Maximum capacity limitation.
- Counters for numbers of pump strokes, operation hours and power on/off.
- 14 optional display languages.
- Level control with input for two level signals.
- Alarm relay output.
- Overload protection

Controls:

Control variant: AR
 Level control: input for dual-level sensor or external start/stop integrated

Liquid:

Pumped liquid: Water
 Selected liquid temperature: 20 °C
 Density: 998.2 kg/m³



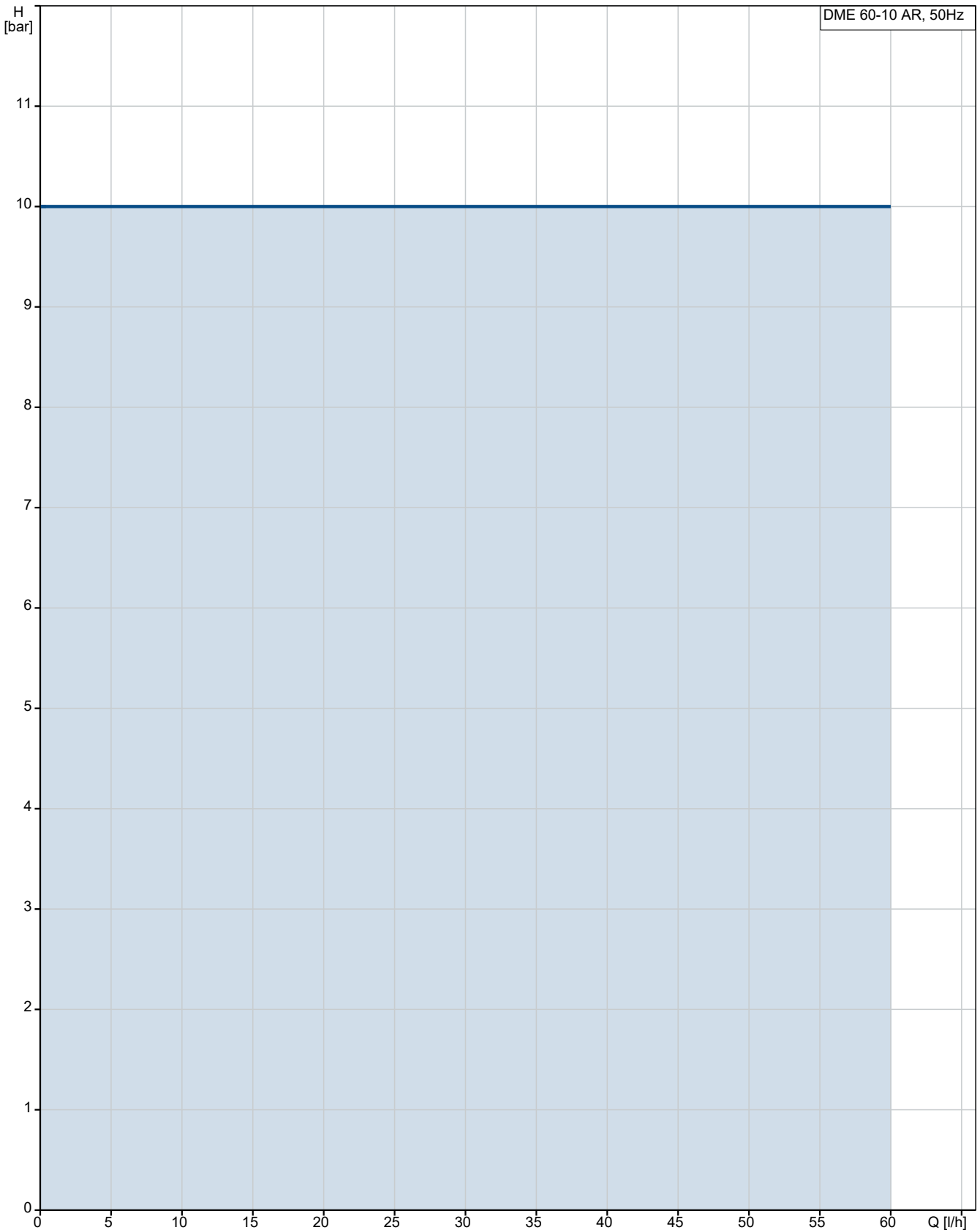
Company name: Al Mawared Engineering & Trading S.A.E (MET)
Created by: Mostafa Mohamed
Phone: 02 26421242 - 01223033998
Email: info@met-eg.com - Almawared@link.net
Date: 08/10/2023

Qty.	Description
1	<p>Technical: Approvals: CE,EAC</p> <p>Materials: Pump housing: Stainless steel 1.4401 Valve ball: Stainless steel 1.4401 Gasket: FKM</p> <p>Installation: Maximum operating pressure: 10 bar Pump inlet: THREADED RP 3/4" Pump outlet: THREADED RP 3/4"</p> <p>Electrical data: Power input - P1: 67.1 W Mains frequency: 50 Hz Rated voltage: 1 x 100-240 V Rated current: 1.25-0.67 A Type of cable plug: SCHUKO</p> <p>Others: Net weight: 15 kg</p>



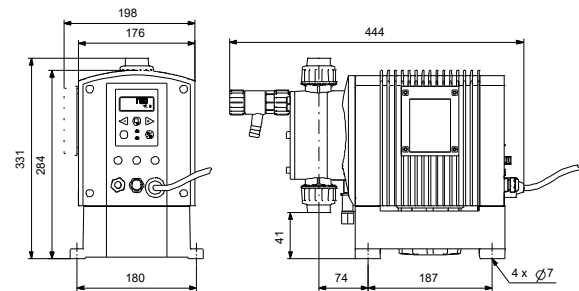
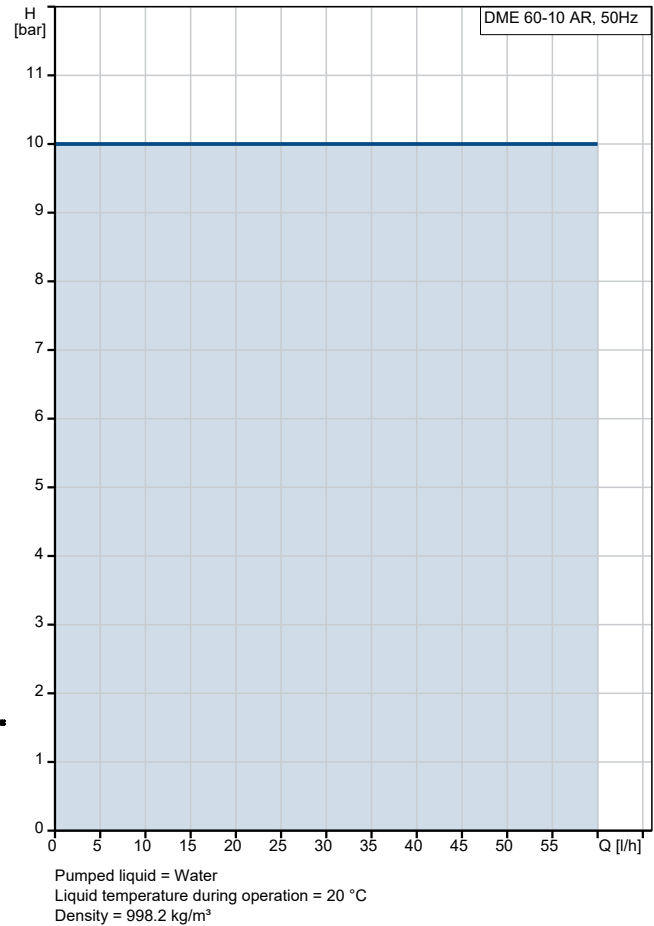
Company name: Al Mawared Engineering & Trading S.A.E (MET)
Created by: Mostafa Mohamed
Phone: 02 26421242 - 01223033998
Email: info@met-eg.com - Almawared@link.net
Date: 08/10/2023

On request DME 60-10 AR 50 Hz



Pumped liquid = Water
Liquid temperature during operation = 20 °C
Density = 998.2 kg/m³

Description	Value
General information:	
Product name:	DME 60-10 AR
Product No:	On request
EAN number:	On request
Technical:	
Max stroke rate:	160 1/min
Max. capacity:	60 l/h
Approvals:	CE,EAC
Anti-cavitation:	function integrated
Venting valve:	no
Valve:	Standard
Materials:	
Pump housing:	Stainless steel 1.4401
Valve ball:	Stainless steel 1.4401
Gasket:	FKM
Installation:	
Maximum operating pressure:	10 bar
Pump inlet:	THREADED RP 3/4"
Pump outlet:	THREADED RP 3/4"
Liquid:	
Pumped liquid:	Water
Selected liquid temperature:	20 °C
Density:	998.2 kg/m ³
Electrical data:	
Power input - P1:	67.1 W
Mains frequency:	50 Hz
Rated voltage:	1 x 100-240 V
Rated current:	1.25-0.67 A
Type of cable plug:	SCHUKO
Controls:	
Control variant:	AR
Control panel:	front
Level control:	input for dual-level sensor or external start/stop integrated
Pulse control:	input for pulse control integrated
Batch (puls):	puls-based batch function integrated
4-20 mA control:	input for analog 4-20 mA control integrated
Capacity limit:	max. capacity limitation function integrated
Batch (timer):	timer-based batch function integrated
Other in/output:	ALARM RELAY
Others:	
Net weight:	15 kg



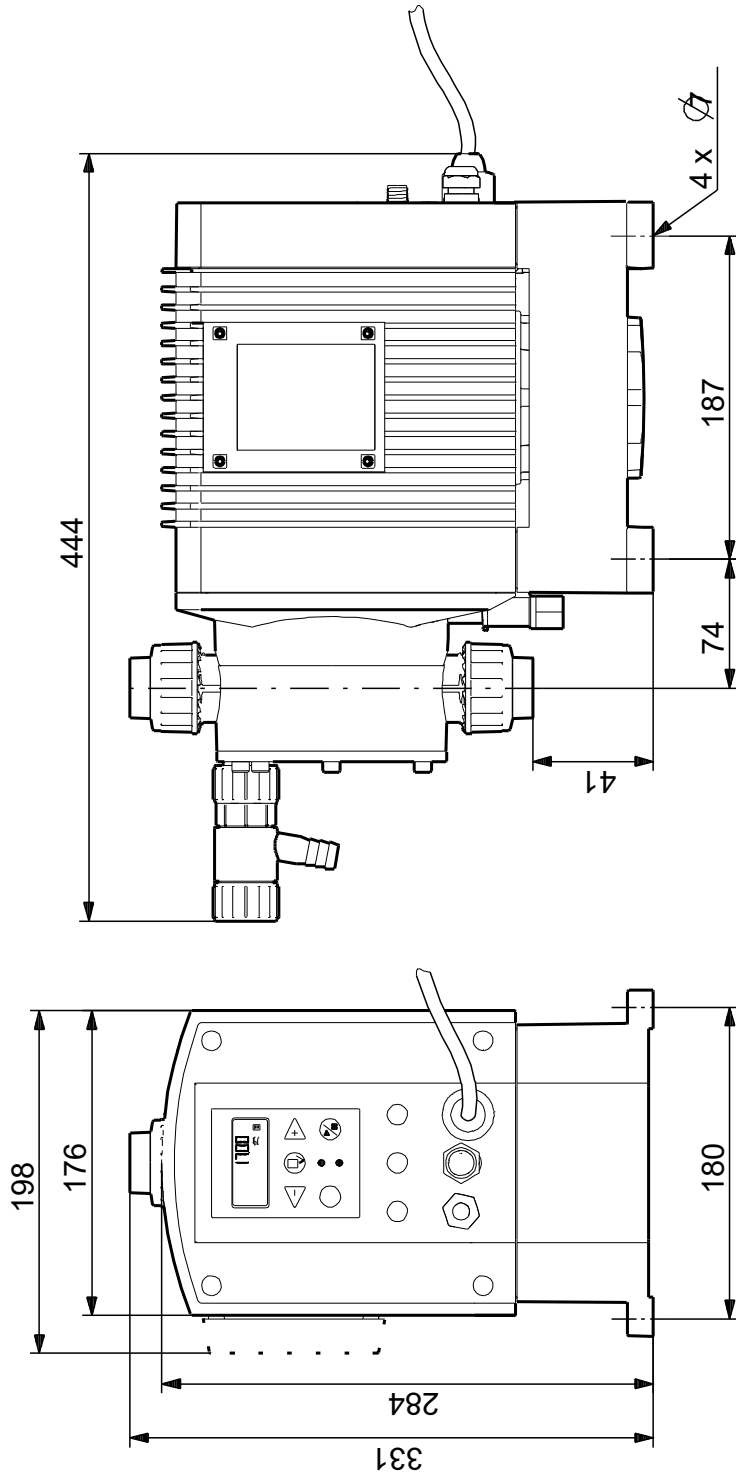
See Installation and Operating Instructions

Siehe Montage- und Betriebsanleitung

Voir Notice d'installation et d'entretien

Se monterings- og driftsinstruktion

On request DME 60-10 AR 50 Hz



Note! All units are in [mm] unless others are stated.
 Disclaimer: This simplified dimensional drawing does not show all details.

On request DME 60-10 AR 50 Hz

See Installation and Operating Instructions

Siehe Montage- und Betriebsanleitung

Voir Notice d'installation et d'entretien

Se monterings- og driftsinstruktion

Note! All units are in [mm] unless others are stated.

