

InduSoft Adapts to Your World



Web-Ready

InduSoft[®]
Realize Your Potential



InduSoft Adapts to Your World

Mobile communication is no longer just a convenience in automation; it is a necessity. The high demand for efficient machines necessitates a steady flow of information that allows remote workers to make timely decisions to improve the speed, quality, or production levels of any process. With InduSoft, you no longer need to tie yourself down to a machine HMI or a PC monitor. InduSoft Web Studio's mobile solutions turn raw data into brilliant graphical representations that can be read and understood at a glance on mobile devices; allowing you to make real-time decisions wherever you are.

Take advantage of these innovations to:

- Save time in maintenance and repair by receiving mobile alerts on your phone or tablet
- View data remotely and avoid unnecessary trips to distant sites
- Make critical decisions while you're on the move
- Give high-level management access to the data they need on any mobile device

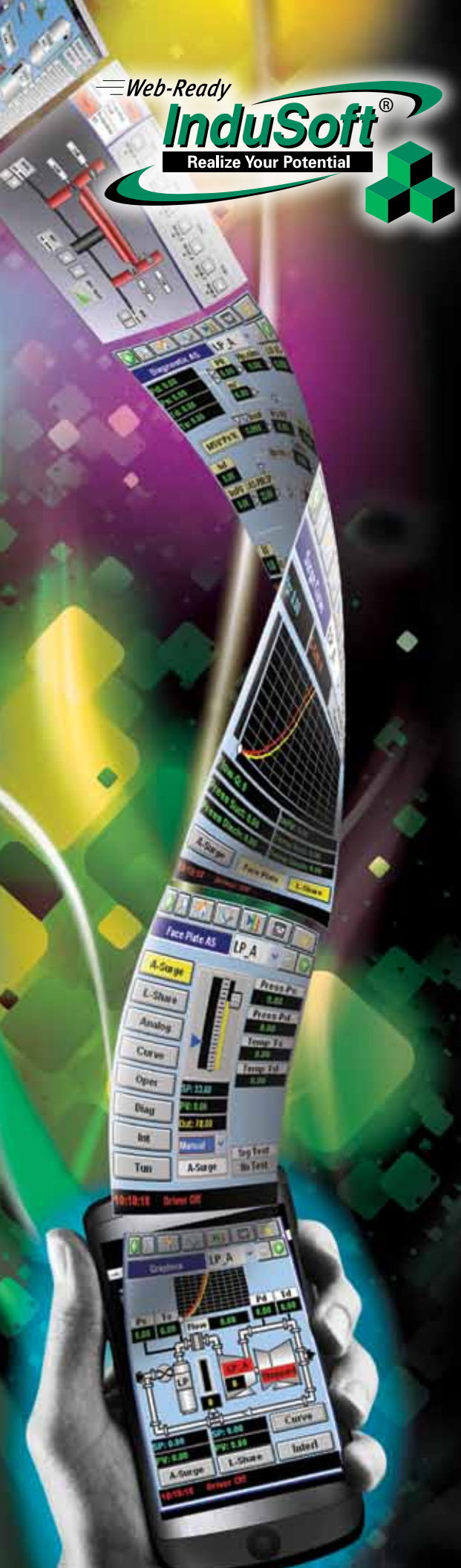
Mobile Solutions Keep Your Process Running

To give you freedom, InduSoft has developed a variety of solutions that keep you in touch with your critical information at all times. InduSoft Web Studio offers three different types of thin clients, allowing you to access your data wherever you go.

Secure Viewer - Solid Performance in a Flexible Solution

The InduSoft Web Studio Secure Viewer is a stable, secure option for viewing process data on any Windows machine that has the Secure Viewer installed. Access your entire application using the Secure Viewer, and take advantage of read/write capabilities. The secure viewer can connect over any TCP/IP connection, whether it is LAN, WAN, modem, satellite, or another connection type.

The security system of InduSoft Web Studio is fully supported. That means you can protect your application by requiring user identification and passwords, and by blocking unauthorized users.



Another layer of protection can be used in the Secure Viewer client. Within the client, only the application can be accessed. By restricting access to internet browsers, the system is protected from malicious incoming data.

Keep maintenance easy and repair times short by installing the Secure Viewer on a machine. Changes to the application can be made once, and the Secure Viewer will update clients automatically.

Web Thin Client - A Robust Browser Based Solution

The InduSoft Web Studio Web Thin Client allows you to view and interact with your screens remotely, using a web connection and Internet Explorer. The Web Thin Client allows you to remotely change process information and view full graphical representations of your machines. Get alarms, view trending information, or any other information you need to make on the go decisions without ever visiting the machine.

Licenses are stored on a server so users can login with Microsoft Internet Explorer from PCs and mobile devices. No additional software is needed, so it is easy to log on from wherever you are.

Studio Mobile Access (SMA) - Your Data on Any Device

InduSoft understands that you need access to process data on smartphones, tablets, and other mobile devices. That's why InduSoft has been leading the way on mobile access for HMI/SCADA software. InduSoft's Studio Mobile Access (Tabular) client does not rely on any one web browser, meaning that you can use the SMA client on any device with an internet connection. For example:

- iPad, iPod Touch, and the iPhone
- Blackberry devices
- Android phones and tablets
- Windows Mobile Phones

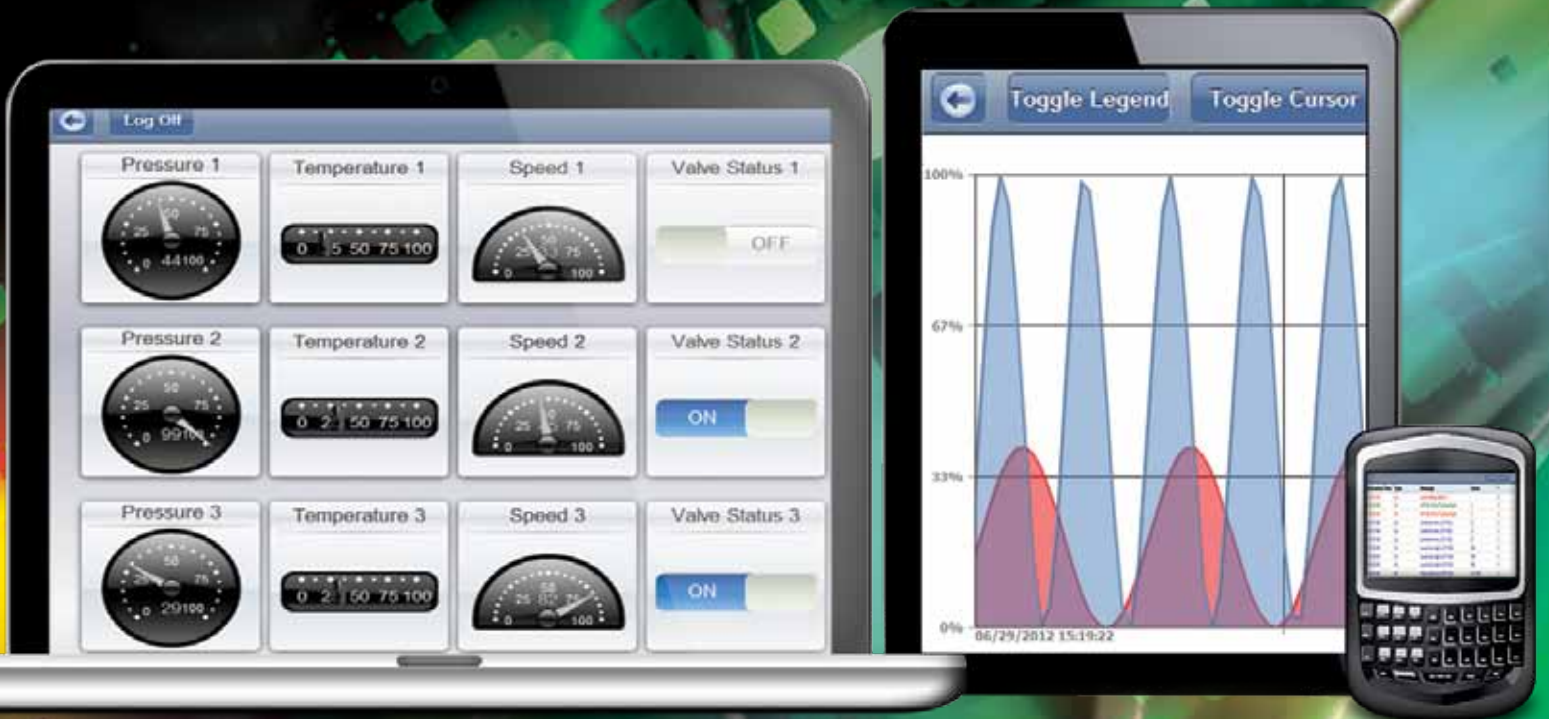
Using the Studio Mobile Access (SMA) client allows you to remotely view and change process variables (tags) from any browser, and remotely monitor and acknowledge alarms while optionally providing comment on acknowledgement, which is critical in FDA 21 CFR part 11 compliant applications.

Enhanced SMA

In InduSoft Web Studio v7.1, InduSoft introduced the Enhanced SMA client that provides critical information, such as alarms and trending information, in the form of attractive widgets and dials. It is built around the new standard HTML 5, and can be deployed on any HTML 5 capable browser with internet access. The Enhanced SMA client can be easily deployed to browsers used in smartphones and tablets, such as those running the iOS and Android operating systems. Now you can get your information on the go; no matter what device you use.

Terminal Servers and Remote Desktop Solutions

InduSoft is a robust SCADA/HMI software solution that enables flexible mobile architecture design. InduSoft supports solutions for a fully visualized application, including terminal server and remote desktop solutions. This allows users to interact with their InduSoft Web Studio project through third-party remote desktop applications. In this way, you can have full control of your InduSoft Web Studio application on devices like the iPad tablet, or any Android tablet or device that supports access to a remote desktop running InduSoft Web Studio.





CEView and EmbeddedView: Full-scale Power in a Mobile Paradigm

With CEView you get all the power of our full-scale monitoring solutions on any mobile device that supports Microsoft Windows CE, Windows Embedded, or Microsoft Windows Mobile. Imagine being able to run InduSoft Web Studio directly on a handheld device or industrial panel computer running Windows CE or Windows Embedded. Plant engineers or IT administrators can be notified the moment a problem occurs, so they can take corrective action immediately; regardless of their physical location.

Just like our full-scale solution, CEView and EmbeddedView collect data throughout your facilities in real time. When you're on-the-go, an easy-to-use interface enables you to monitor, analyze, and forecast key performance indicators with just a few strokes of your stylus or touch screen. Without interrupting production, applications and databases can communicate and compare events as they occur, so you can take necessary action immediately. The data correlation engine in our powerful, handheld solution enables the comparison of current data to historical data and provides warnings and alarms when thresholds are exceeded.

InduSoft's simple, drilldown capability enables you to pinpoint problems and specify them immediately- wherever you are. It also produces reports that enable you to monitor performance and quality, and continually optimize performance as you implement changes. Trends are supported by local, rich graphics. With InduSoft, you're in control even when you're not on site.

A New Architecture for a New World

CEView and EmbeddedView are unique in the industry. With these fully featured mobile and embedded solutions, data can reside native to any CE or Windows Embedded based Tablet, smartphone, or industrial device. Collect your data, make any necessary adjustments, and upload your changes. The pay-off to you is improved performance, and the convenience of being able to synchronize your data at your discretion.

The InduSoft Advantage

InduSoft offers something no other SCADA/HMI solution provides - an assurance that our software will follow you into the future as trends in technology and business change. We are constantly innovating and offering new solutions to help you and your business grow. Add to that world-class customer support, and you have the recipe for a long relationship you can feel confident in. Join us as we continue to develop exciting new solutions for SCADA/HMI software that takes you everywhere you need to go.



Visit us online:
InduSoft.com

For more information, contact us at **877-INDUSOFT**
or **512-349-0334** or email us at **info@indusoft.com**

©2012 InduSoft, Inc. All rights reserved worldwide.

100112-BR-MOB-A-ENLT-PT

For more information, contact:

MET الموارد للهندسة والتجارة ش.م.م.
Almawared Engineering and Trading
2, Ahmed Taysser St., Heliopolis - Cairo - Egypt
Tel. : +202 24192480 Fax : +202 24192483
e-mail : almawared@link.net