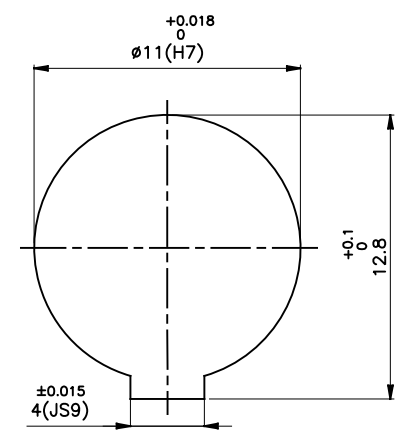
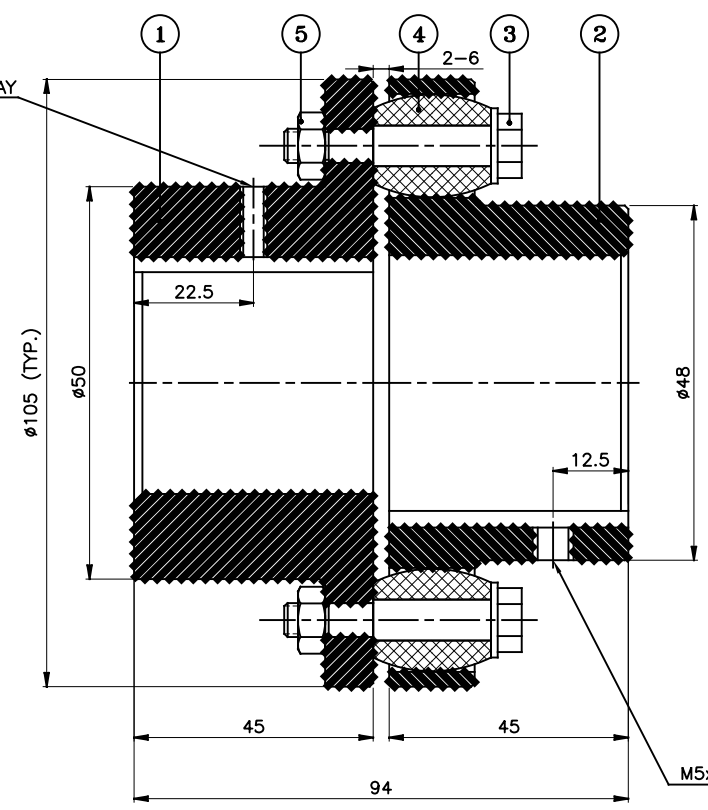


DRIVE END



DRIVEN END

APPLICATION DETAILS	
APPLICATION	-
RATED POWER	-
RATED SPEED	-
RATED TORQUE	-
A.S.F.	-

COUPLING SPECIFICATIONS	
COUPLING RATING	2.5 kW @ 100 RPM
RATED TORQUE	0.24 kNm.
PEAK TORQUE	0.48 kNm.
MAX. SPEED	7200 rpm.
MAX. BORE	PIN HALF 32 mm
	BUSH HALF 30 mm
WEIGHT (Approx.)	2.47 Kg
INERTIA (WK ²)	0.0037 Kg ^m ²

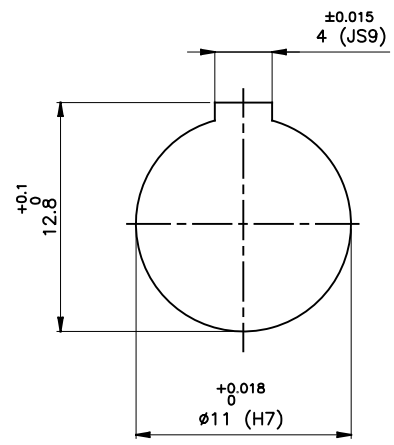
MAX. MISALIGNMENTS	
AXIAL DEFLECTION	± 2 mm.
ANGULAR DEFLECTION	1°
RADIAL DEFLECTION	0.3 mm

REV.	DMRN NO.	DESCRIPTION	REV. BY	APPD. BY	DATE

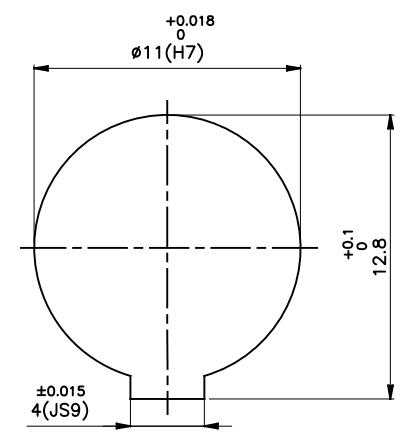
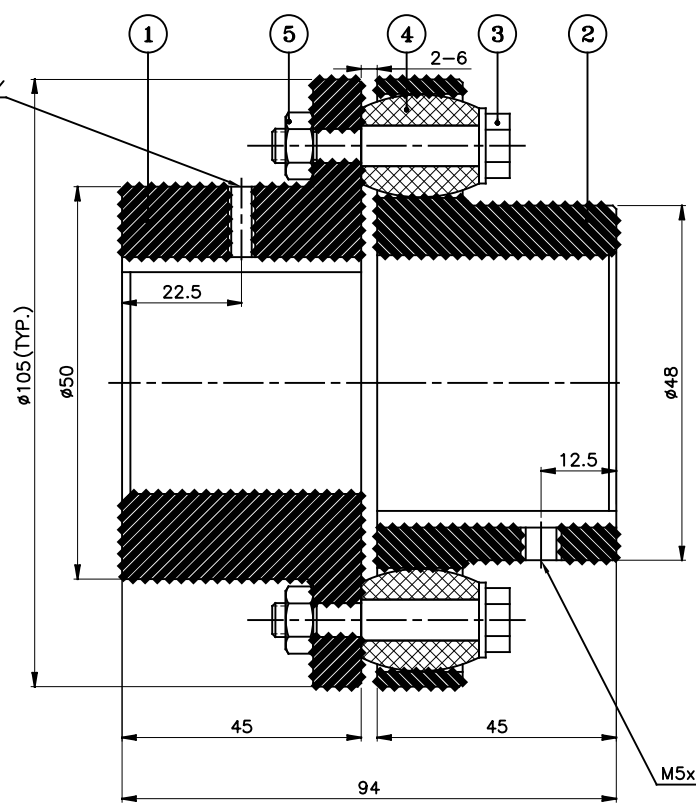
SR NO	DESCRIPTION	MATERIAL	QTY
5	NYLOCK NUT	NYLOCK NUT GR. 8	3
4	BUSH	H TRANS	3
3	PIN	EN-8D/15B25	3
2	BUSH HALF	CI IS-210 Gr.FG-260	1
1	PIN HALF	CI IS-210 Gr.FG-260	1

TITLE:	RB-105-3 /----- CPLG.	MATERIAL:	REFER TABLE	AUTHORITY:	INITIALS	SIGN	DATE
CUSTOMER NAME:				DRAWN	-	-	-
				CHECKED	-	-	-
				APPROVED	-	-	-
				SCALE: NTS	REF. No.:	-	
						DRG. No.:	

This drawing / information / design is the property of Rathi Transpower Pvt. Ltd. It is confidential & must not be made public or copied without prior written authorization & is subjected to recall at any time. Acceptance of this drawing constitutes full agreement with these conditions



DRIVE END



DRIVEN END

APPLICATION DETAILS			
APPLICATION	-		
RATED POWER	-		
RATED SPEED	-		
RATED TORQUE	-		
A.S.F.	-		
COUPLING SPECIFICATIONS			
COUPLING RATING	1kW @ 100 RPM		
RATED TORQUE	0.095 kNm.		
PEAK TORQUE	0.19 kNm.		
MAX. SPEED	7200 rpm.		
MAX. BORE	PIN HALF	32 mm	
	BUSH HALF	30 mm	
WEIGHT(Approx.)	2.47 Kg		
INERTIA (WK ²)	0.0037 Kg ²		
COUPLING HUBS DYNAMICALLY BALANCED TO GR. 6.3 AS PER ISO: 1940-1.			
MAX. MISALIGNMENTS			
AXIAL DEFLECTION	± 2 mm.		
ANGULAR DEFLECTION	1°		
RADIAL DEFLECTION	0.3 mm		

SR NO	DESCRIPTION	MATERIAL	QTY
5	NYLOCK NUT	NYLOCK NUT GR. 8	3
4	BUSH	STAINL. STEEL	3
3	PIN	EN-8D/15B25	3
2	BUSH HALF	CI IS-210 Gr.FG-260	1
1	PIN HALF	CI IS-210 Gr.FG-260	1

REV.	DMRN NO.	DESCRIPTION	REV. BY	APPD. BY	DATE

TITLE: **RB-105-3 /----- CPLG.**

MATERIAL: REFER TABLE

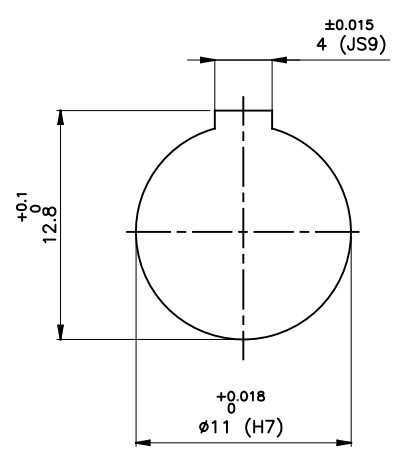
CUSTOMER NAME: _____

SCALE: NTS REF. No.: _____

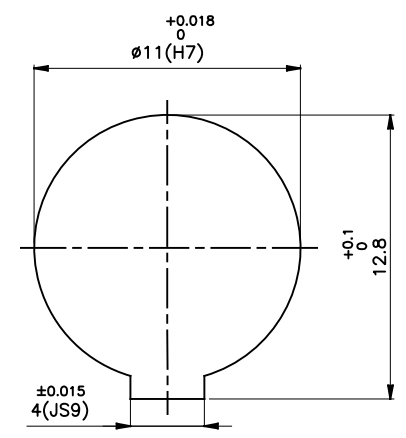
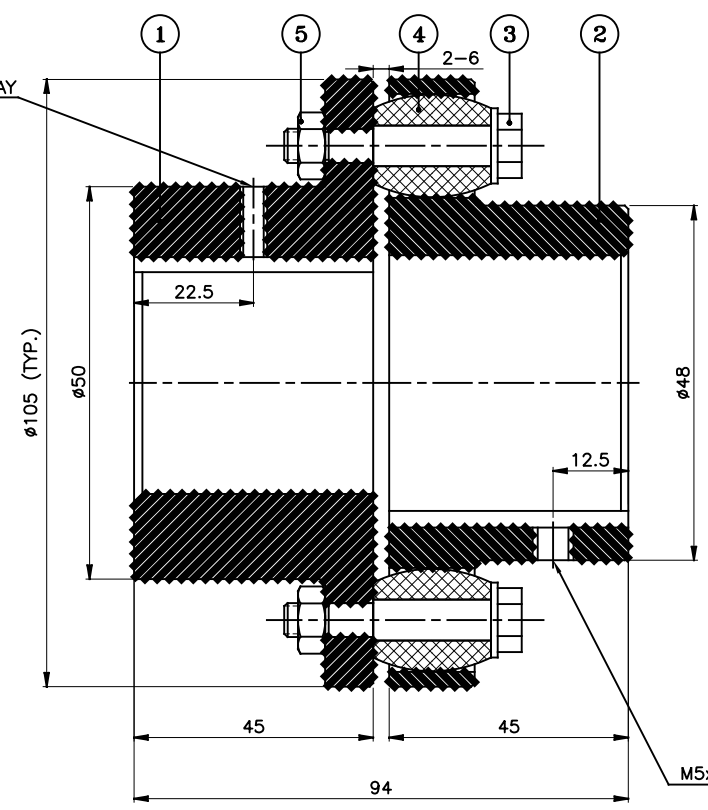
RATHI RATHI TRANSPower PVT LTD PUNE 411014

DRG. No.: _____

This drawing / information / design is the property of Rathi Transpower Pvt. Ltd. It is confidential & must not be made public or copied without prior written authorization & is subjected to recall at any time. Acceptance of this drawing constitutes full agreement with these conditions



DRIVE END



DRIVEN END

APPLICATION DETAILS	
APPLICATION	-
RATED POWER	-
RATED SPEED	-
RATED TORQUE	-
A.S.F.	-

COUPLING SPECIFICATIONS	
COUPLING RATING	1.5 kW @ 100 RPM
RATED TORQUE	0.14 kNm.
PEAK TORQUE	0.21 kNm.
MAX. SPEED	7200 rpm.
MAX. BORE	PIN HALF 32 mm
	BUSH HALF 30 mm
WEIGHT(Approx.)	2.47 Kg
INERTIA (WK ²)	0.0037 Kg ²

MAX. MISALIGNMENTS	
AXIAL DEFLECTION	± 2 mm.
ANGULAR DEFLECTION	1°
RADIAL DEFLECTION	0.3 mm

REV.	DMRN NO.	DESCRIPTION	REV. BY	APPD. BY	DATE

SR NO	DESCRIPTION	MATERIAL	QTY
5	NYLOCK NUT	NYLOCK NUT GR. 8	3
4	BUSH	FOUR	3
3	PIN	EN-8D/15B25	3
2	BUSH HALF	CI IS-210 Gr.FG-260	1
1	PIN HALF	CI IS-210 Gr.FG-260	1

TITLE:	RB-105-3 /---- CPLG.	MATERIAL:	REFER TABLE	AUTHORITY:	INITIALS	SIGN	DATE
CUSTOMER NAME:				DRAWN	-	-	-
				CHECKED	-	-	-
				APPROVED	-	-	-
				SCALE: NTS	REF. No.:	-	
						-	
				DRG. No.:		----	

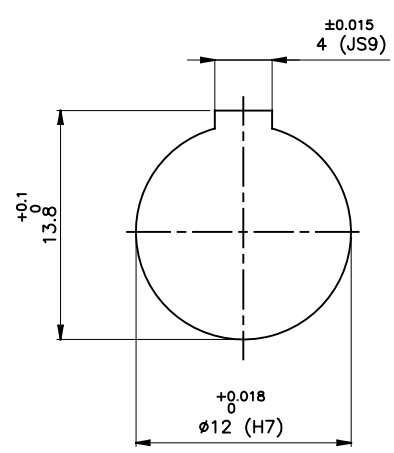


RATHI TRANSPWER PVT LTD
PUNE 411014

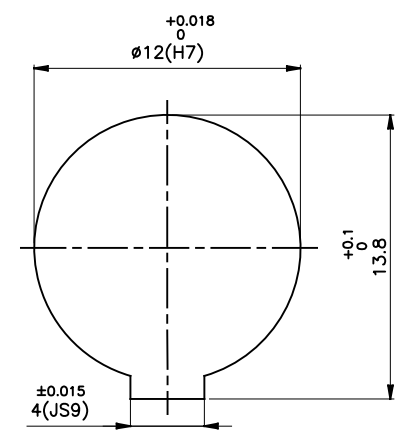
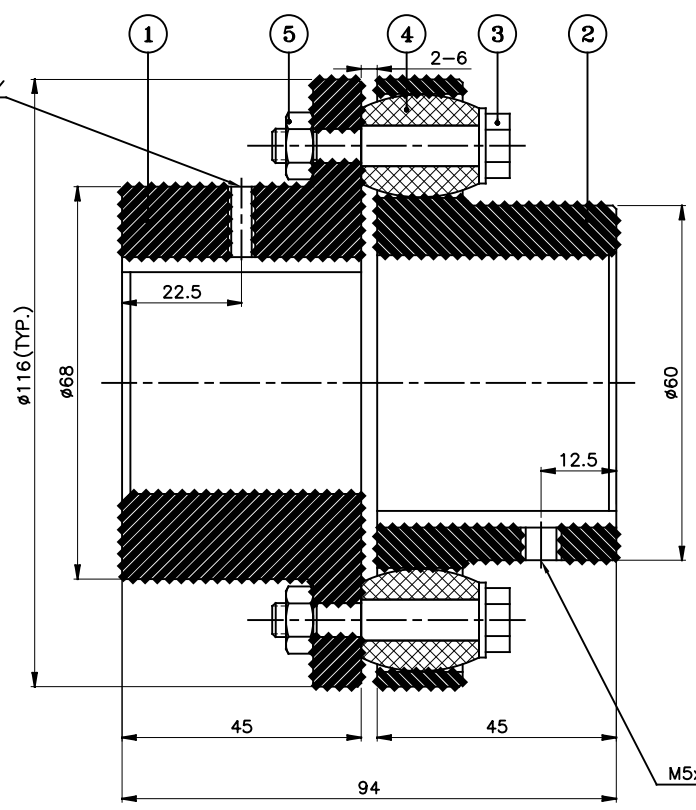
3 EN-F-112, REV.1

This drawing / information / design is the property of Rathi Transpower Pvt. Ltd. It is confidential & must not be made public or copied without prior written authorization & is subjected to recall at any time. Acceptance of this drawing constitutes full agreement with these conditions

J I H G F E D C B A



DRIVE END



DRIVEN END

APPLICATION DETAILS

APPLICATION	-
RATED POWER	-
RATED SPEED	-
RATED TORQUE	-
A.S.F.	-

COUPLING SPECIFICATIONS

COUPLING RATING	3.8kW @ 100 RPM
RATED TORQUE	0.358 kNm.
PEAK TORQUE	0.716 kNm.
MAX. SPEED	6100 rpm.
MAX. BORE	PIN HALF 42 mm BUSH HALF 39 mm
WEIGHT(Approx.)	3.43 Kg
INERTIA (WK ²)	0.0066 Kg ²

COUPLING HUBS DYNAMICALLY BALANCED TO GR. 6.3 AS PER ISO: 1940-1.

MAX. MISALIGNMENTS

AXIAL DEFLECTION	± 2 mm.
ANGULAR DEFLECTION	1°
RADIAL DEFLECTION	0.3 mm

5	NYLOCK NUT	NYLOCK NUT GR. 8	4
4	BUSH	H TRANS	4
3	PIN	EN-8D/15B25	4
2	BUSH HALF	CI IS-210 Gr.FG-260	1
1	PIN HALF	CI IS-210 Gr.FG-260	1
SR NO	DESCRIPTION	MATERIAL	QTY

REV.	DMRN NO.	DESCRIPTION	REV. BY	APPD. BY	DATE

TITLE: **RB-116-4 /----- CPLG.** MATERIAL: REFER TABLE

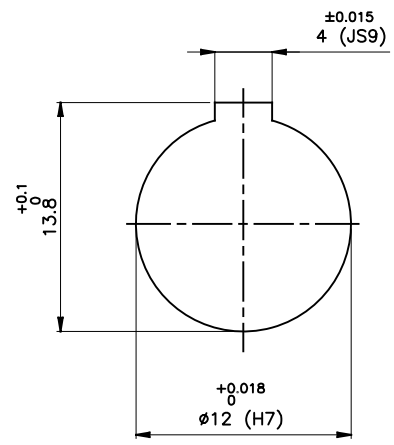
CUSTOMER NAME: _____

AUTHORITY	INITIALS	SIGN	DATE
DRAWN	-	-	-
CHECKED	-	-	-
APPROVED	-	-	-

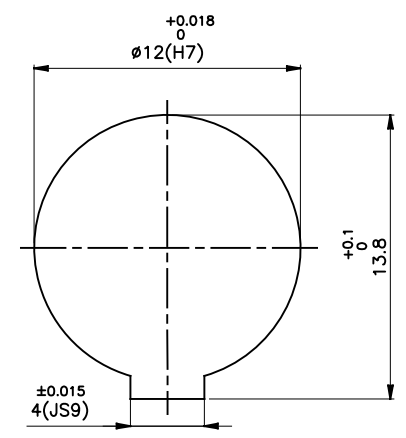
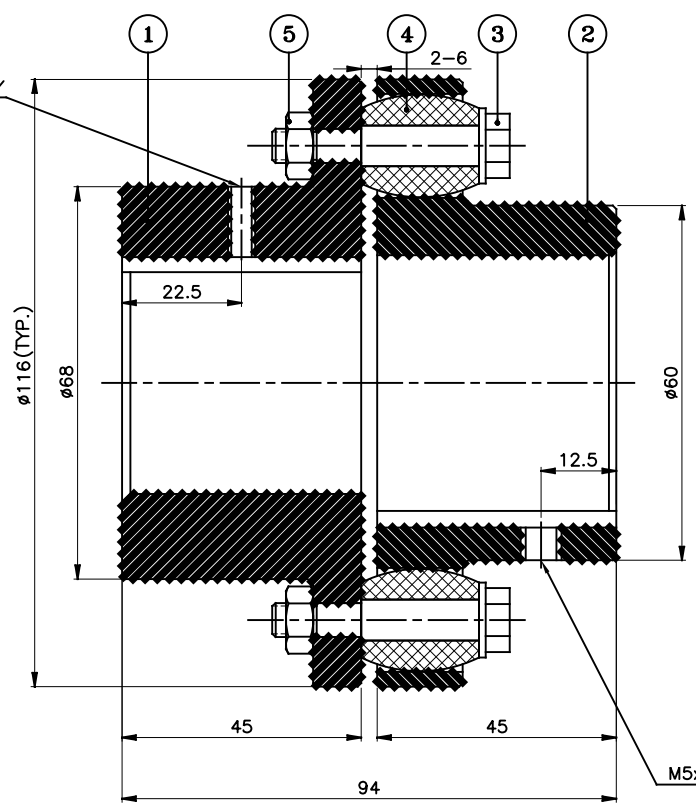
SCALE: NTS REF. No.: _____

RATHI RATHI TRANSPower PVT LTD PUNE 411014 DRG. No.: _____

This drawing / information / design is the property of Rathi Transpower Pvt. Ltd. It is confidential & must not be made public or copied without prior written authorization & is subjected to recall at any time. Acceptance of this drawing constitutes full agreement with these conditions



DRIVE END



DRIVEN END

APPLICATION DETAILS	
APPLICATION	-
RATED POWER	-
RATED SPEED	-
RATED TORQUE	-
A.S.F.	-

COUPLING SPECIFICATIONS	
COUPLING RATING	1.5kW @ 100 RPM
RATED TORQUE	0.14 kNm.
PEAK TORQUE	0.28 kNm.
MAX. SPEED	6100 rpm.
MAX. BORE	PIN HALF 42 mm BUSH HALF 39 mm
WEIGHT(Approx.)	3.43 Kg
INERTIA (WK ²)	0.0066 Kg ^m ²

MAX. MISALIGNMENTS	
AXIAL DEFLECTION	± 2 mm.
ANGULAR DEFLECTION	1°
RADIAL DEFLECTION	0.3 mm

SR NO	DESCRIPTION	MATERIAL	QTY
5	NYLOCK NUT	NYLOCK NUT GR. 8	4
4	BUSH	STEEL BUSH	4
3	PIN	EN-8D/15B25	4
2	BUSH HALF	CI IS-210 Gr.FG-260	1
1	PIN HALF	CI IS-210 Gr.FG-260	1

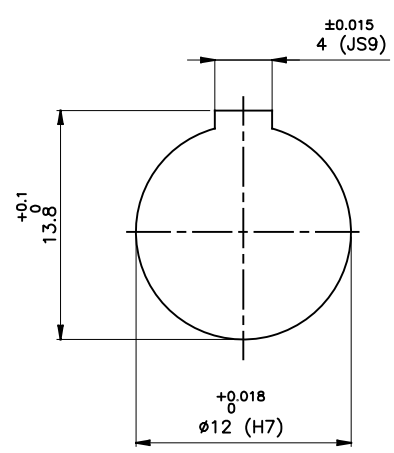
REV.	DMRN NO.	DESCRIPTION	REV. BY	APPD. BY	DATE

TITLE:	RB-116-4 /----- CPLG.	MATERIAL:	REFER TABLE	AUTHORITY:	INITIALS	SIGN	DATE
CUSTOMER NAME:				DRAWN	-	-	-
				CHECKED	-	-	-
				APPROVED	-	-	-
				SCALE: NTS	REF. No.:	-	-

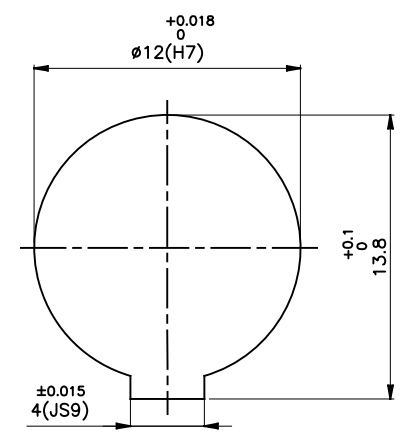
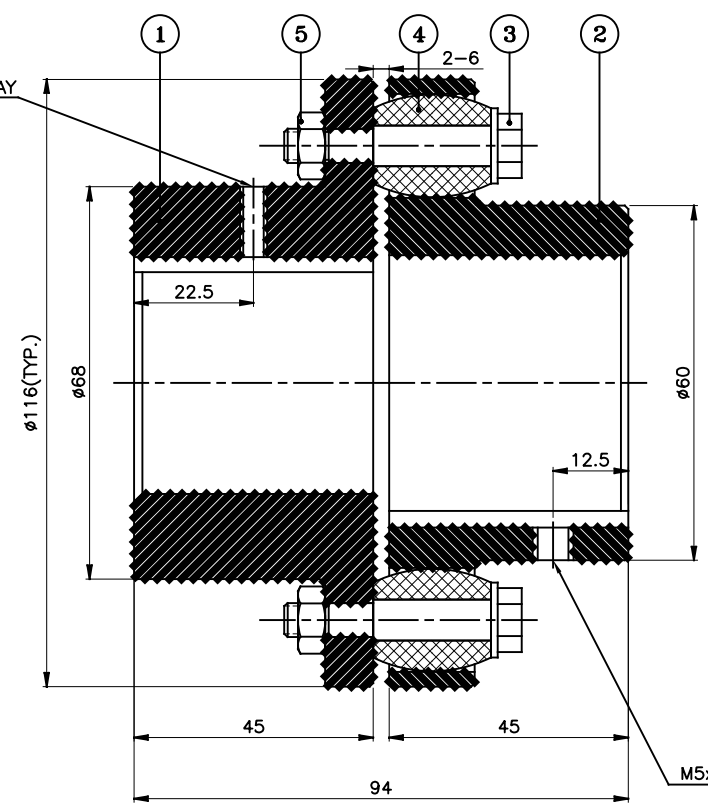
RATHI RATHI TRANSPower PVT LTD PUNE 411014 DRG. No.: -

This drawing / information / design is the property of Rathi Transpower Pvt. Ltd. It is confidential & must not be made public or copied without prior written authorization & is subjected to recall at any time. Acceptance of this drawing constitutes full agreement with these conditions

J I H G F E D C B A



DRIVE END



DRIVEN END

M5x0.8P SET SCREW ON KEYWAY

APPLICATION DETAILS	
APPLICATION	-
RATED POWER	-
RATED SPEED	-
RATED TORQUE	-
A.S.F.	-

COUPLING SPECIFICATIONS	
COUPLING RATING	2.3 kW @ 100 RPM
RATED TORQUE	0.21 kNm.
PEAK TORQUE	0.42 kNm.
MAX. SPEED	6100 rpm.
MAX. BORE	PIN HALF 42 mm
	BUSH HALF 39 mm
WEIGHT(Approx.)	3.43 Kg
INERTIA (WK ²)	0.0066 Kg ^m ²

MAX. MISALIGNMENTS	
AXIAL DEFLECTION	± 2 mm.
ANGULAR DEFLECTION	1°
RADIAL DEFLECTION	0.3 mm

REV.	DMRN NO.	DESCRIPTION	REV. BY	APPD. BY	DATE

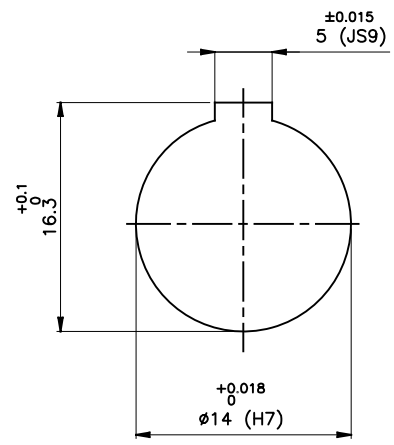
SR NO	DESCRIPTION	MATERIAL	QTY
5	NYLOCK NUT	NYLOCK NUT GR. 8	4
4	BUSH	POURING	4
3	PIN	EN-8D/15B25	4
2	BUSH HALF	CI IS-210 Gr.FG-260	1
1	PIN HALF	CI IS-210 Gr.FG-260	1

TITLE: RB-116-4 /----- CPLG.		MATERIAL: REFER TABLE		AUTHORITY	INITIALS	SIGN	DATE
CUSTOMER NAME:				DRAWN	-	-	-
				CHECKED	-	-	-
				APPROVED	-	-	-
				SCALE: NTS	REF. No.:	-	
				DRG. No.:		-	

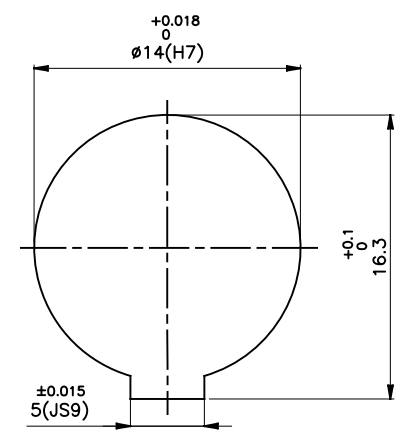
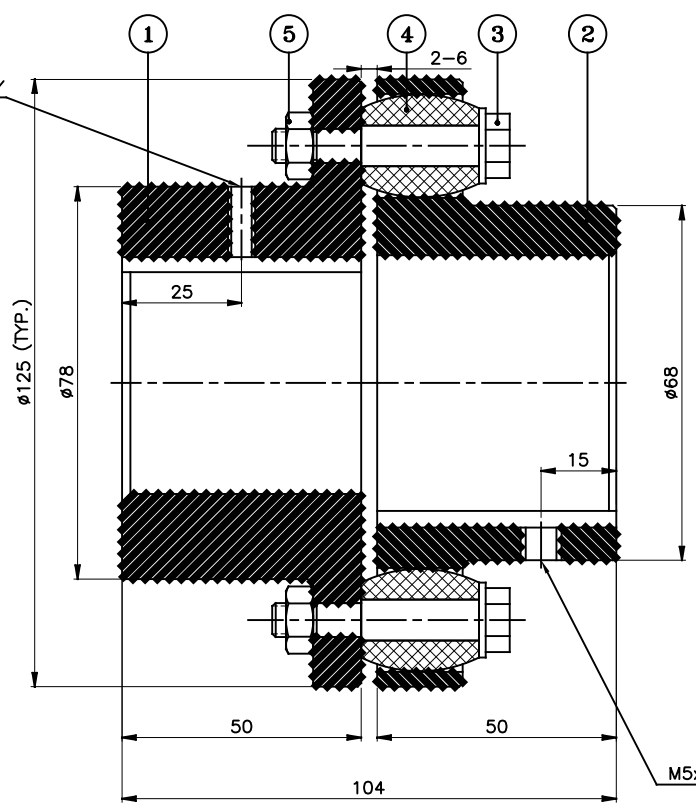


RATHI TRANSPWER PVT LTD
PUNE 411014

This drawing / information / design is the property of Rathi Transpower Pvt. Ltd. It is confidential & must not be made public or copied without prior written authorization & is subjected to recall at any time. Acceptance of this drawing constitutes full agreement with these conditions



DRIVE END



DRIVEN END

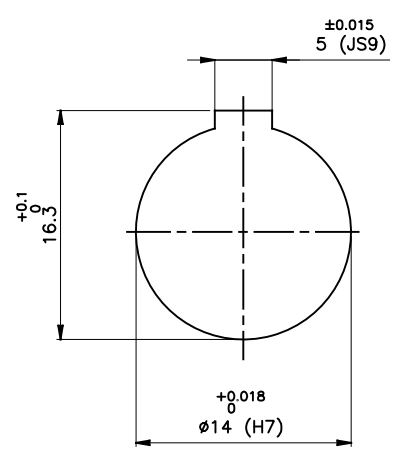
APPLICATION DETAILS			
APPLICATION	-		
RATED POWER	-		
RATED SPEED	-		
RATED TORQUE	-		
A.S.F.	-		
COUPLING SPECIFICATIONS			
COUPLING RATING	4.3 kW @ 100 RPM		
RATED TORQUE	0.40 kNm.		
PEAK TORQUE	0.80 kNm.		
MAX. SPEED	5500 rpm.		
MAX. BORE	PIN HALF	50 mm	
	BUSH HALF	45 mm	
WEIGHT(Approx.)	4.3 Kg		
INERTIA (WK ²)	0.0097 Kgm ²		
COUPLING HUBS DYNAMICALLY BALANCED TO GR. 6.3 AS PER ISO: 1940-1.			
MAX. MISALIGNMENTS			
AXIAL DEFLECTION	± 2 mm.		
ANGULAR DEFLECTION	1°		
RADIAL DEFLECTION	0.4 mm		

SR NO	DESCRIPTION	MATERIAL	QTY
5	NYLOCK NUT	NYLOCK NUT GR. 8	4
4	BUSH	H TRANS	4
3	PIN	EN-8D/15B25	4
2	BUSH HALF	CI IS-210 Gr.FG-260	1
1	PIN HALF	CI IS-210 Gr.FG-260	1

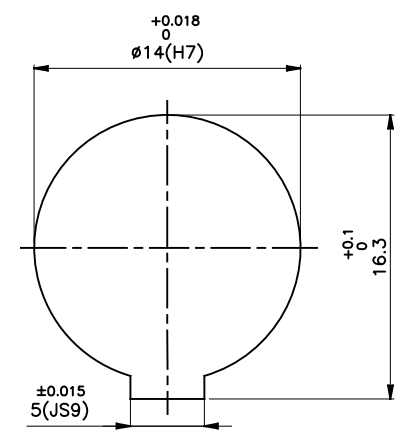
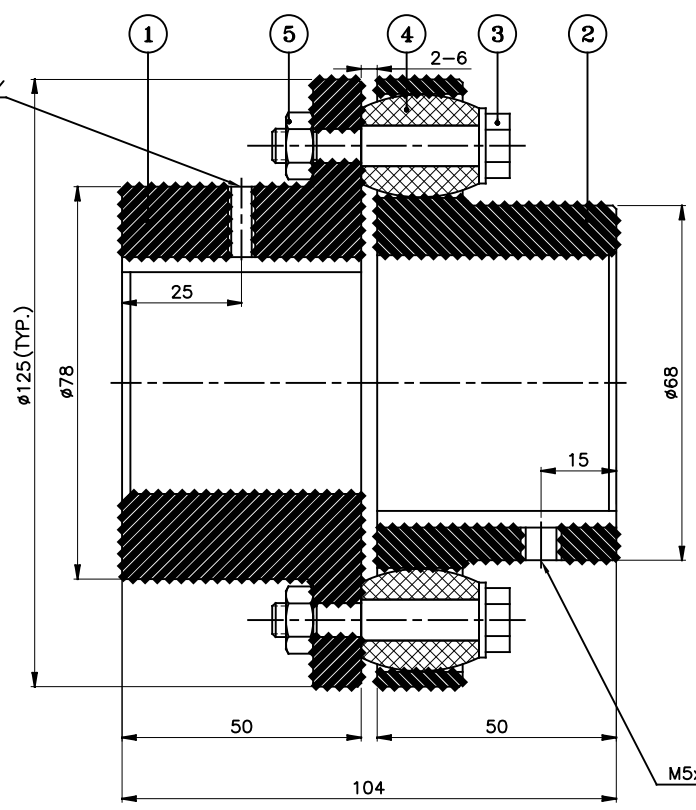
REV.	DMRN NO.	DESCRIPTION	REV. BY	APPD. BY	DATE

TITLE: RB-125-4 /----- CPLG.		MATERIAL: REFER TABLE		AUTHORITY	INITIALS	SIGN	DATE
CUSTOMER NAME:				DRAWN	-	-	-
				CHECKED	-	-	-
				APPROVED	-	-	-
				SCALE: NTS	REF. No.:	-	
						-	
				DRG. No.:		-	
				RATHI TRANSPower PVT LTD PUNE 411014			

This drawing / information / design is the property of Rathi Transpower Pvt. Ltd. It is confidential & must not be made public or copied without prior written authorization & is subjected to recall at any time. Acceptance of this drawing constitutes full agreement with these conditions



DRIVE END



DRIVEN END

APPLICATION DETAILS

APPLICATION	-
RATED POWER	-
RATED SPEED	-
RATED TORQUE	-
A.S.F.	-

COUPLING SPECIFICATIONS

COUPLING RATING	1.7 kW @ 100 RPM
RATED TORQUE	0.16 kNm.
PEAK TORQUE	0.32 kNm.
MAX. SPEED	5500 rpm.
MAX. BORE	PIN HALF 50 mm
	BUSH HALF 45 mm
WEIGHT(Approx.)	4.3 Kg
INERTIA (WK ²)	0.0097 Kgm ²

COUPLING HUBS DYNAMICALLY BALANCED TO GR. 6.3 AS PER ISO: 1940-1.

MAX. MISALIGNMENTS

AXIAL DEFLECTION	± 2 mm.
ANGULAR DEFLECTION	1°
RADIAL DEFLECTION	0.4 mm

5	NYLOCK NUT	NYLOCK NUT GR. 8	4
4	BUSH	STEEL BUSH	4
3	PIN	EN-8D/15B25	4
2	BUSH HALF	CI IS-210 Gr.FG-260	1
1	PIN HALF	CI IS-210 Gr.FG-260	1
SR NO	DESCRIPTION	MATERIAL	QTY

REV.	DMRN NO.	DESCRIPTION	REV. BY	APPD. BY	DATE

TITLE: **RB-125-4 /----- CPLG.**

MATERIAL: REFER TABLE

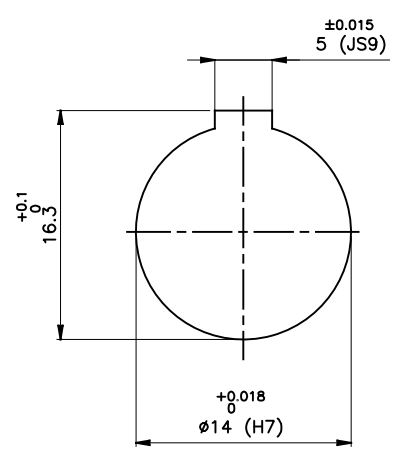
CUSTOMER NAME: _____

SCALE: NTS REF. No.: _____

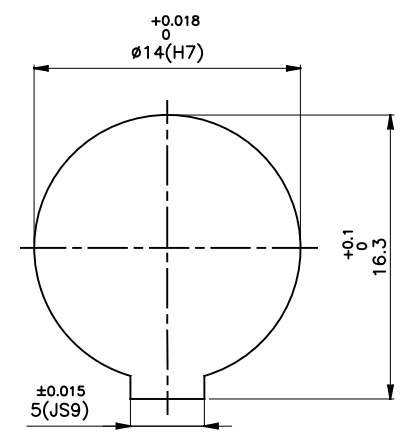
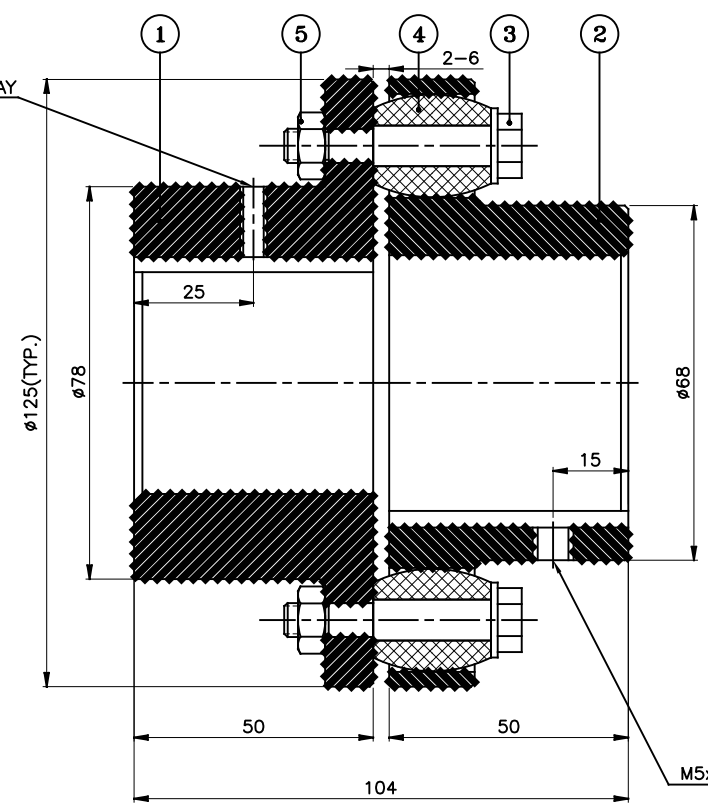
RATHI RATHI TRANSPower PVT LTD PUNE 411014

DRG. No.: _____

This drawing / information / design is the property of Rathi Transpower Pvt. Ltd. It is confidential & must not be made public or copied without prior written authorization & is subjected to recall at any time. Acceptance of this drawing constitutes full agreement with these conditions



DRIVE END



DRIVEN END

M5x0.8P SET SCREW ON KEYWAY

APPLICATION DETAILS

APPLICATION	-
RATED POWER	-
RATED SPEED	-
RATED TORQUE	-
A.S.F.	-

COUPLING SPECIFICATIONS

COUPLING RATING	2.6 kW @ 100 RPM
RATED TORQUE	0.24 kNm.
PEAK TORQUE	0.48 kNm.
MAX. SPEED	5500 rpm.
MAX. BORE	PIN HALF 50 mm BUSH HALF 45 mm
WEIGHT (Approx.)	4.3 Kg
INERTIA (WK ²)	0.0097 Kgm ²

COUPLING HUBS DYNAMICALLY BALANCED TO GR. 6.3 AS PER ISO: 1940-1.

MAX. MISALIGNMENTS

AXIAL DEFLECTION	± 2 mm.
ANGULAR DEFLECTION	1°
RADIAL DEFLECTION	0.4 mm

5	NYLOCK NUT	NYLOCK NUT GR. 8	4
4	BUSH	POLYURETHANE	4
3	PIN	EN-8D/15B25	4
2	BUSH HALF	CI IS-210 Gr.FG-260	1
1	PIN HALF	CI IS-210 Gr.FG-260	1
SR NO	DESCRIPTION	MATERIAL	QTY

REV.	DMRN NO.	DESCRIPTION	REV. BY	APPD. BY	DATE

TITLE: **RB-125-4 /----- CPLG.**

MATERIAL: REFER TABLE

CUSTOMER NAME: _____

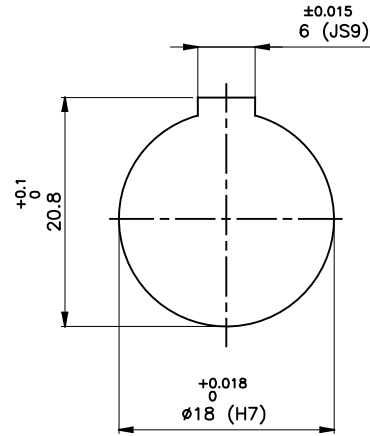
SCALE: NTS REF. No.: _____

RATHI RATHI TRANSPower PVT LTD PUNE 411014

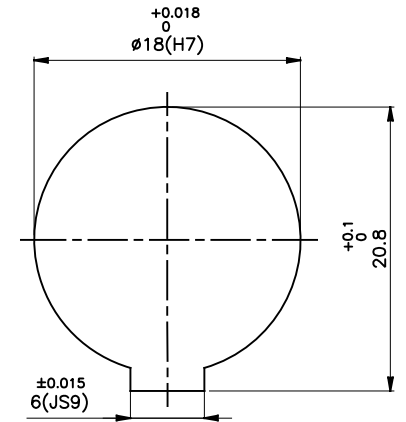
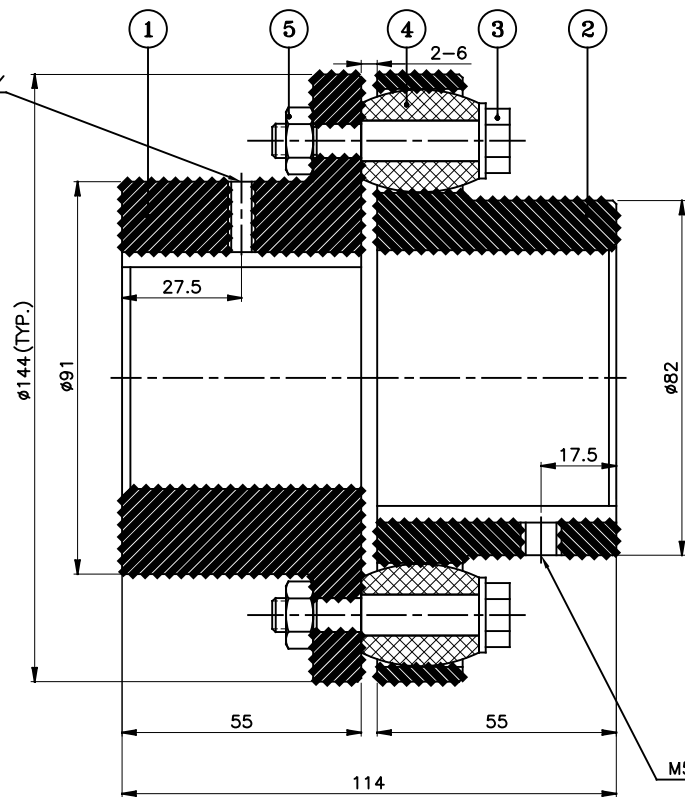
DRG. No.: _____

This drawing / information / design is the property of Rathi Transpower Pvt. Ltd. It is confidential & must not be made public or copied without prior written authorization & is subjected to recall at any time. Acceptance of this drawing constitutes full agreement with these conditions

J I H G F E D C B A



DRIVE END



DRIVEN END

APPLICATION DETAILS			
APPLICATION	-		
RATED POWER	-		
RATED SPEED	-		
RATED TORQUE	-		
A.S.F.	-		
COUPLING SPECIFICATIONS			
COUPLING RATING	8.3 kW @ 100 RPM		
RATED TORQUE	0.788 kNm.		
PEAK TORQUE	1.576 kNm.		
MAX. SPEED	4900 rpm.		
MAX. BORE	PIN HALF	60 mm	
	BUSH HALF	50 mm	
WEIGHT(Approx.)	6.15 Kg		
INERTIA (WK ²)	0.0172 Kgm ²		
COUPLING HUBS DYNAMICALLY BALANCED TO GR. 6.3 AS PER ISO: 1940-1.			
MAX. MISALIGNMENTS			
AXIAL DEFLECTION	± 2 mm.		
ANGULAR DEFLECTION	1°		
RADIAL DEFLECTION	0.4 mm		

REV.	DMRN NO.	DESCRIPTION	REV. BY	APPD. BY	DATE

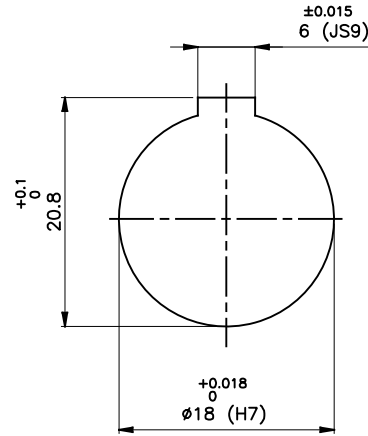
5	NYLOCK NUT	NYLOCK NUT GR. 8	6
4	BUSH	H TRANS	6
3	PIN	EN-8D/15B25	6
2	BUSH HALF	CI IS-210 Gr.FG-260	1
1	PIN HALF	CI IS-210 Gr.FG-260	1
SR NO	DESCRIPTION	MATERIAL	QTY

TITLE:	RB-144-6 /----- CPLG.	MATERIAL:	REFER TABLE	AUTHORITY	INITIALS	SIGN	DATE
CUSTOMER NAME:				DRAWN	-	-	-
				CHECKED	-	-	-
				APPROVED	-	-	-
				SCALE: NTS	REF. No.:	-	
						-	
				DRG. No.:		-	

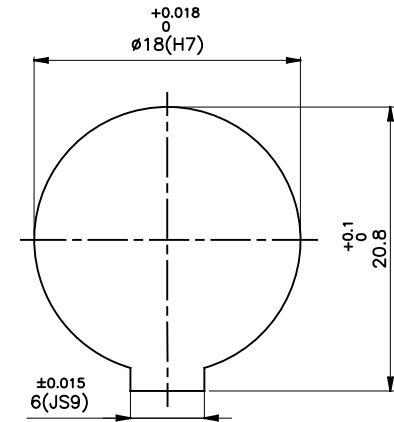
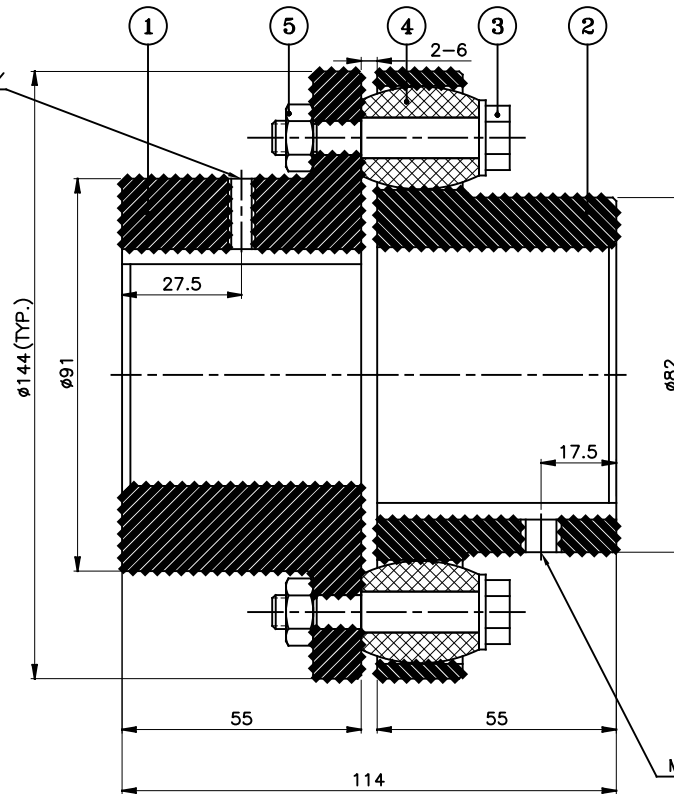


RATHI TRANSPOWER PVT LTD
PUNE 411014

This drawing / information / design is the property of Rathi Transpower Pvt. Ltd. It is confidential & must not be made public or copied without prior written authorization & is subjected to recall at any time. Acceptance of this drawing constitutes full agreement with these conditions



DRIVE END



DRIVEN END

APPLICATION DETAILS

APPLICATION	-
RATED POWER	-
RATED SPEED	-
RATED TORQUE	-
A.S.F.	-

COUPLING SPECIFICATIONS

COUPLING RATING	3.3 kW @ 100 RPM
RATED TORQUE	0.315 kNm.
PEAK TORQUE	0.63 kNm.
MAX. SPEED	4900 rpm.
MAX. BORE	PIN HALF 60 mm BUSH HALF 50 mm
WEIGHT(Approx.)	6.15 Kg
INERTIA (WK ²)	0.0172 Kg ^m ²


COUPLING HUBS DYNAMICALLY BALANCED TO GR. 6.3 AS PER ISO: 1940-1.

MAX. MISALIGNMENTS

AXIAL DEFLECTION	± 2 mm.
ANGULAR DEFLECTION	1°
RADIAL DEFLECTION	0.4 mm

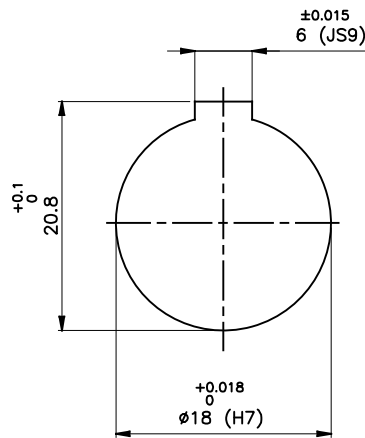
5	NYLOCK NUT	NYLOCK NUT GR. 8	6
4	BUSH	NYLOCK NUT	6
3	PIN	EN-8D/15B25	6
2	BUSH HALF	CI IS-210 Gr.FG-260	1
1	PIN HALF	CI IS-210 Gr.FG-260	1
SR NO	DESCRIPTION	MATERIAL	QTY

REV.	DMRN NO.	DESCRIPTION	REV. BY	APPD. BY	DATE

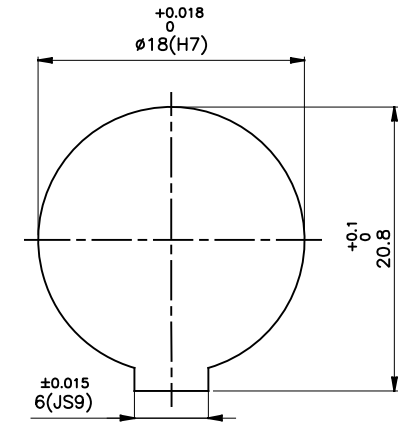
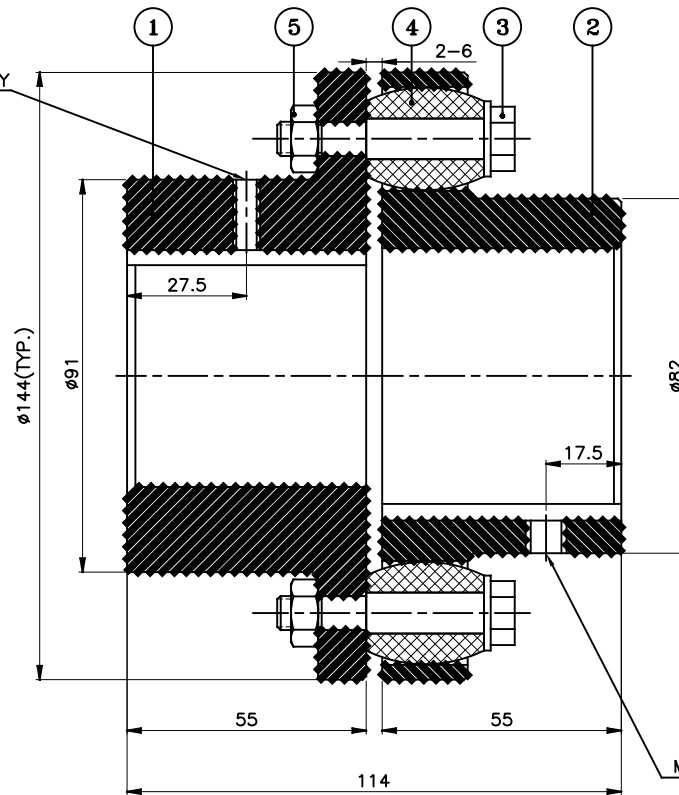
TITLE:	MATERIAL:	AUTHORITY	INITIALS	SIGN	DATE
RB-144-6 /---- CPLG.	REFER TABLE	DRAWN	-	-	-
CUSTOMER NAME:	APPROVED	CHECKED	-	-	-
	SCALE: NTS	REF. No.:	-	-	-
					DRG. No.:
RATHI TRANSPower PVT LTD PUNE 411014					-

This drawing / information / design is the property of Rathi Transpower Pvt. Ltd. It is confidential & must not be made public or copied without prior written authorization & is subjected to recall at any time. Acceptance of this drawing constitutes full agreement with these conditions

J I H G F E D C B A



DRIVE END



DRIVEN END

M5x0.8P SET SCREW ON KEYWAY

APPLICATION DETAILS

APPLICATION	-
RATED POWER	-
RATED SPEED	-
RATED TORQUE	-
A.S.F.	-

COUPLING SPECIFICATIONS

COUPLING RATING	5 kW @ 100 RPM
RATED TORQUE	0.47 kNm.
PEAK TORQUE	0.94 kNm.
MAX. SPEED	4900 rpm.
MAX. BORE	PIN HALF 60 mm BUSH HALF 50 mm
WEIGHT(Approx.)	6.15 Kg
INERTIA (WK ²)	0.0172 Kg ^m ²

COUPLING HUBS DYNAMICALLY BALANCED TO GR. 6.3 AS PER ISO: 1940-1.

MAX. MISALIGNMENTS

AXIAL DEFLECTION	± 2 mm.
ANGULAR DEFLECTION	1°
RADIAL DEFLECTION	0.4 mm

5	NYLOCK NUT	NYLOCK NUT GR. 8	6
4	BUSH	POLYURETHANE	6
3	PIN	EN-8D/15B25	6
2	BUSH HALF	CI IS-210 Gr.FG-260	1
1	PIN HALF	CI IS-210 Gr.FG-260	1
SR NO	DESCRIPTION	MATERIAL	QTY

REV.	DMRN NO.	DESCRIPTION	REV. BY	APPD. BY	DATE

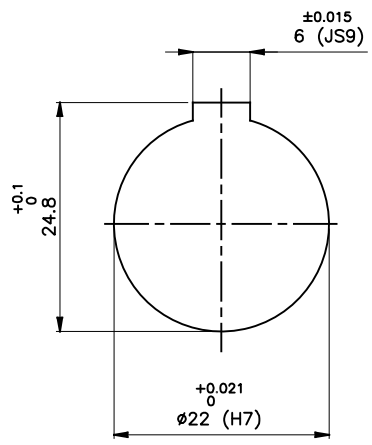
TITLE: **RB-144-6 /----- CPLG.** MATERIAL: REFER TABLE

CUSTOMER NAME: _____

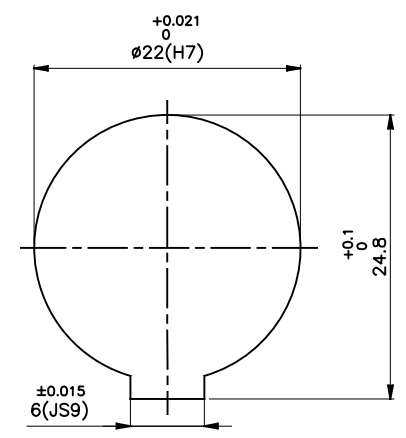
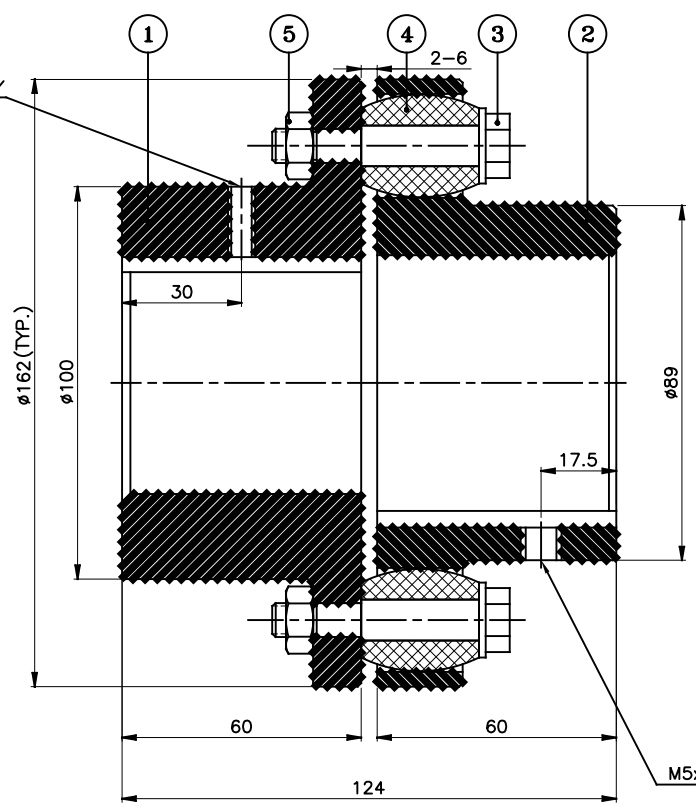
SCALE: NTS REF. No.: _____

RATHI RATHI TRANSPower PVT LTD PUNE 411014 DRG. No.: _____

This drawing / information / design is the property of Rathi Transpower Pvt. Ltd. It is confidential & must not be made public or copied without prior written authorization & is subjected to recall at any time. Acceptance of this drawing constitutes full agreement with these conditions



DRIVE END



DRIVEN END

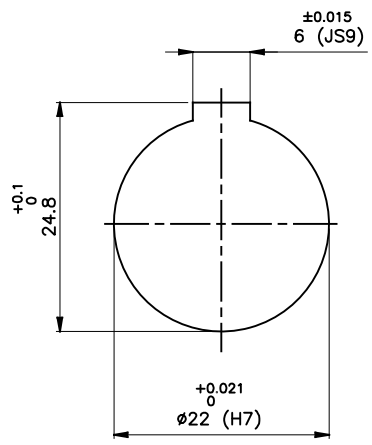
APPLICATION DETAILS		
APPLICATION	-	
RATED POWER	-	
RATED SPEED	-	
RATED TORQUE	-	
A.S.F.	-	
COUPLING SPECIFICATIONS		
COUPLING RATING	14 kW @ 100 RPM	
RATED TORQUE	1.33 kNm.	
PEAK TORQUE	2.6 kNm.	
MAX. SPEED	4500 rpm.	
MAX. BORE	PIN HALF	65 mm
	BUSH HALF	60 mm
WEIGHT(Approx.)	10.22 Kg	
INERTIA (WK ²)	0.0409 Kg ^m ²	
COUPLING HUBS DYNAMICALLY BALANCED TO GR. 6.3 AS PER ISO: 1940-1.		
MAX. MISALIGNMENTS		
AXIAL DEFLECTION	± 2 mm.	
ANGULAR DEFLECTION	1°	
RADIAL DEFLECTION	0.4 mm	

REV.	DMRN NO.	DESCRIPTION	REV. BY	APPD. BY	DATE

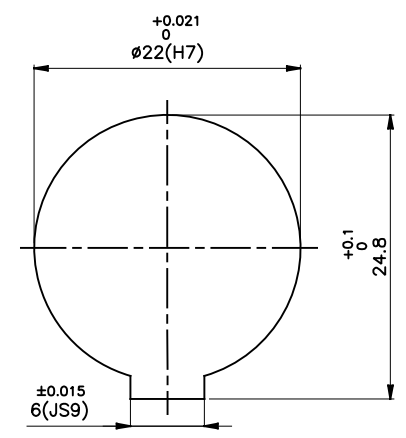
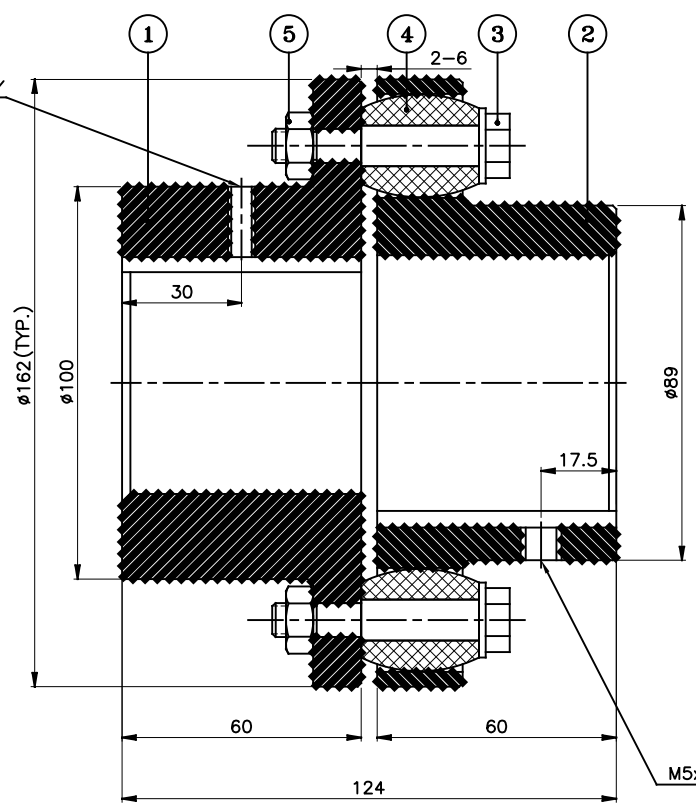
5	NYLOCK NUT	NYLOCK NUT GR. 8	6
4	BUSH	H TRANS	6
3	PIN	EN-8D/15B25	6
2	BUSH HALF	CI IS-210 Gr.FG-260	1
1	PIN HALF	CI IS-210 Gr.FG-260	1
SR NO	DESCRIPTION	MATERIAL	QTY

TITLE: RB-162-6 /----- CPLG.		MATERIAL: REFER TABLE		AUTHORITY	INITIALS	SIGN	DATE
CUSTOMER NAME:				DRAWN	-	-	-
				CHECKED	-	-	-
				APPROVED	-	-	-
				SCALE: NTS	REF. No.:	-	
				RATHI TRANSPower PVT LTD		DRG. No.:	
				PUNE 411014		-	

This drawing / information / design is the property of Rathi Transpower Pvt. Ltd. It is confidential & must not be made public or copied without prior written authorization & is subjected to recall at any time. Acceptance of this drawing constitutes full agreement with these conditions



DRIVE END



DRIVEN END

APPLICATION DETAILS

APPLICATION	-
RATED POWER	-
RATED SPEED	-
RATED TORQUE	-
A.S.F.	-

COUPLING SPECIFICATIONS

COUPLING RATING	5.5 kW @ 100 RPM
RATED TORQUE	0.52 kNm.
PEAK TORQUE	1.05 kNm.
MAX. SPEED	4500 rpm.
MAX. BORE	PIN HALF 65 mm BUSH HALF 60 mm
WEIGHT (Approx.)	10.22 Kg
INERTIA (WK ²)	0.0409 Kg m ²

COUPLING HUBS DYNAMICALLY BALANCED TO GR. 6.3 AS PER ISO: 1940-1.

MAX. MISALIGNMENTS

AXIAL DEFLECTION	± 2 mm.
ANGULAR DEFLECTION	1°
RADIAL DEFLECTION	0.4 mm

5	NYLOCK NUT	NYLOCK NUT GR. 8	6
4	BUSH	STEEL BUSH	6
3	PIN	EN-8D/15B25	6
2	BUSH HALF	CI IS-210 Gr.FG-260	1
1	PIN HALF	CI IS-210 Gr.FG-260	1
SR NO	DESCRIPTION	MATERIAL	QTY

REV.	DMRN NO.	DESCRIPTION	REV. BY	APPD. BY	DATE

TITLE: **RB-162-6 /---- CPLG.**

MATERIAL: REFER TABLE

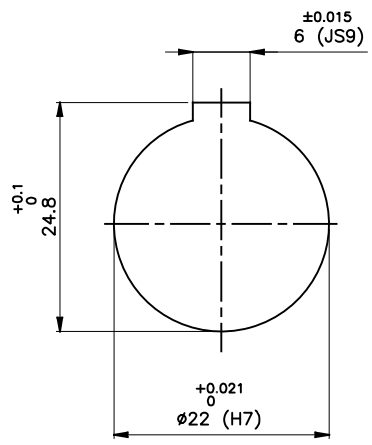
CUSTOMER NAME:

SCALE: NTS REF. No.: -

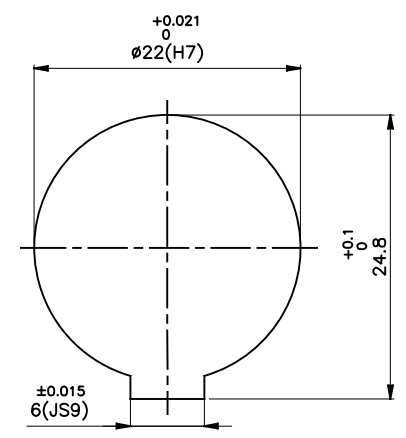
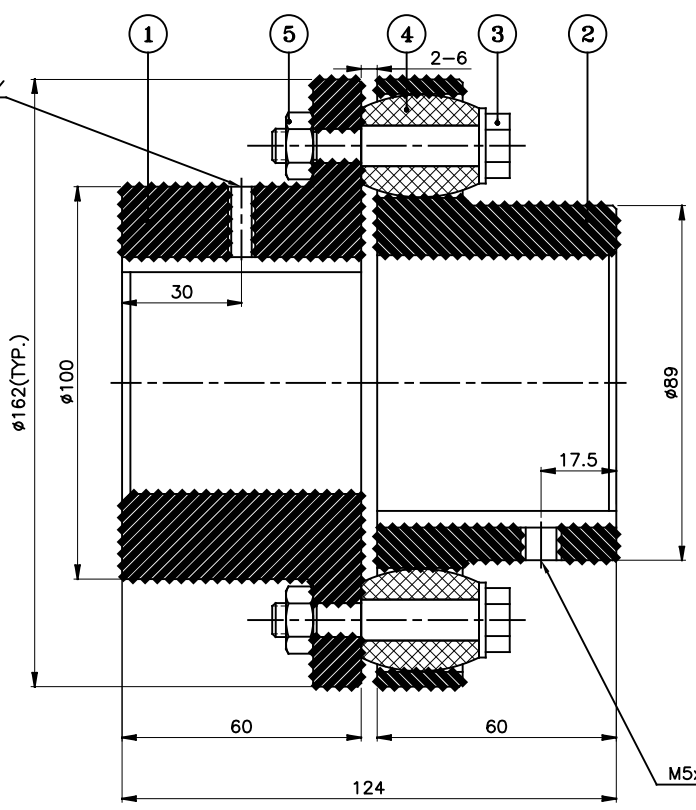
RAHI RATHI TRANSPower PVT LTD PUNE 411014

DRG. No.: -

This drawing / information / design is the property of Rathi Transpower Pvt. Ltd. It is confidential & must not be made public or copied without prior written authorization & is subjected to recall at any time. Acceptance of this drawing constitutes full agreement with these conditions



DRIVE END



DRIVEN END

APPLICATION DETAILS	
APPLICATION	-
RATED POWER	-
RATED SPEED	-
RATED TORQUE	-
A.S.F.	-

COUPLING SPECIFICATIONS	
COUPLING RATING	8.3 kW @ 100 RPM
RATED TORQUE	0.78 kNm.
PEAK TORQUE	1.56 kNm.
MAX. SPEED	4500 rpm.
MAX. BORE	PIN HALF 65 mm BUSH HALF 60 mm
WEIGHT (Approx.)	10.22 Kg
INERTIA (WK ²)	0.0409 Kg m ²

MAX. MISALIGNMENTS	
AXIAL DEFLECTION	± 2 mm.
ANGULAR DEFLECTION	1°
RADIAL DEFLECTION	0.4 mm

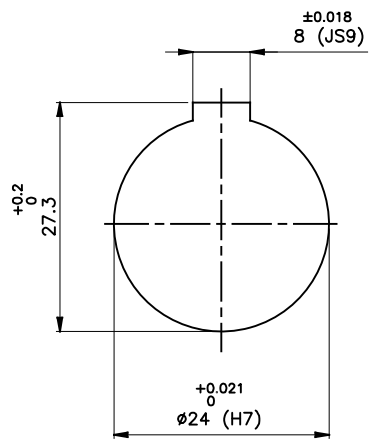
REV.	DMRN NO.	DESCRIPTION	REV. BY	APPD. BY	DATE

SR NO	DESCRIPTION	MATERIAL	QTY
5	NYLOCK NUT	NYLOCK NUT GR. 8	6
4	BUSH	POLYURETHANE	6
3	PIN	EN-8D/15B25	6
2	BUSH HALF	CI IS-210 Gr.FG-260	1
1	PIN HALF	CI IS-210 Gr.FG-260	1

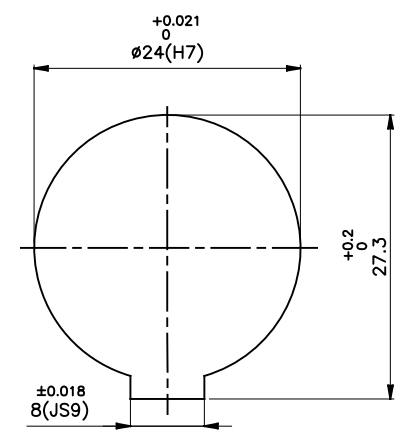
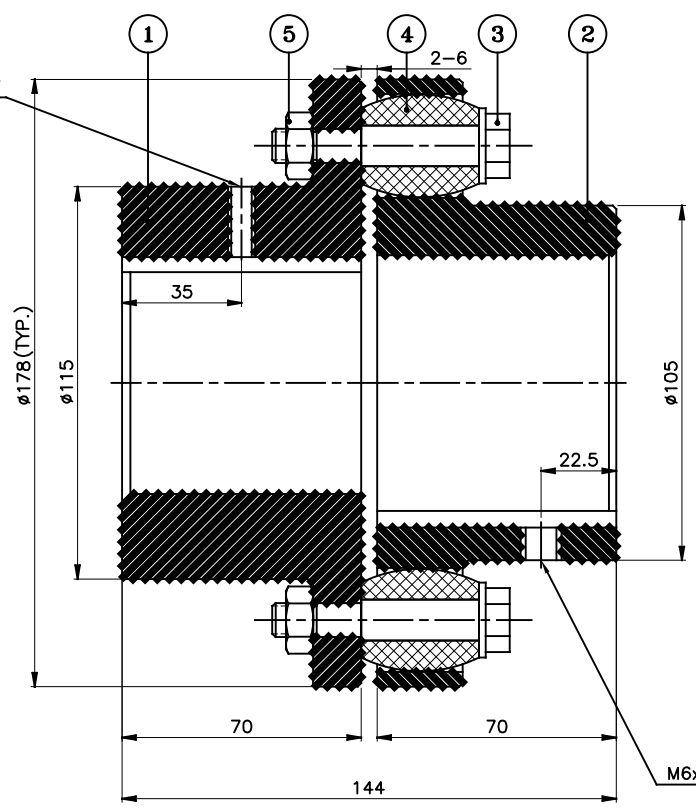
TITLE:	RB-162-6 /----- CPLG.	MATERIAL:	REFER TABLE	AUTHORITY:	INITIALS	SIGN	DATE
CUSTOMER NAME:				DRAWN	-	-	-
				CHECKED	-	-	-
				APPROVED	-	-	-
				SCALE: NTS	REF. No.:	-	
						-	
							DRG. No.:
							-
				RATHI TRANSPower PVT LTD PUNE 411014			

This drawing / information / design is the property of Rathi Transpower Pvt. Ltd. It is confidential & must not be made public or copied without prior written authorization & is subjected to recall at any time. Acceptance of this drawing constitutes full agreement with these conditions

J I H G F E D C B A



DRIVE END



DRIVEN END

APPLICATION DETAILS

APPLICATION	-
RATED POWER	-
RATED SPEED	-
RATED TORQUE	-
A.S.F.	-

COUPLING SPECIFICATIONS

COUPLING RATING	17 kW @ 100 RPM
RATED TORQUE	1.62 kNm.
PEAK TORQUE	3.24 kNm.
MAX. SPEED	3800 rpm.
MAX. BORE	PIN HALF 75 mm BUSH HALF 70 mm
WEIGHT(Approx.)	14.05 Kg
INERTIA (WK ²)	0.056 Kgm ²

COUPLING HUBS DYNAMICALLY BALANCED TO GR. 6.3 AS PER ISO: 1940-1.

MAX. MISALIGNMENTS

AXIAL DEFLECTION	± 2 mm.
ANGULAR DEFLECTION	1°
RADIAL DEFLECTION	0.5 mm

5	NYLOCK NUT	NYLOCK NUT GR. 8	6
4	BUSH	H TRANS	6
3	PIN	EN-8D/15B25	6
2	BUSH HALF	CI IS-210 Gr.FG-260	1
1	PIN HALF	CI IS-210 Gr.FG-260	1
SR NO	DESCRIPTION	MATERIAL	QTY

REV.	DMRN NO.	DESCRIPTION	REV. BY	APPD. BY	DATE

TITLE: **RB-178-6 /----- CPLG.**

MATERIAL: REFER TABLE

CUSTOMER NAME:

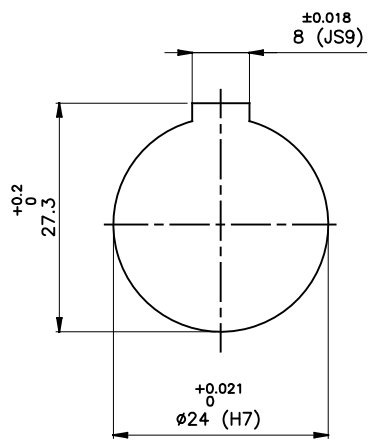
SCALE: NTS REF. No.: -

RATHI RATHI TRANSPower PVT LTD PUNE 411014

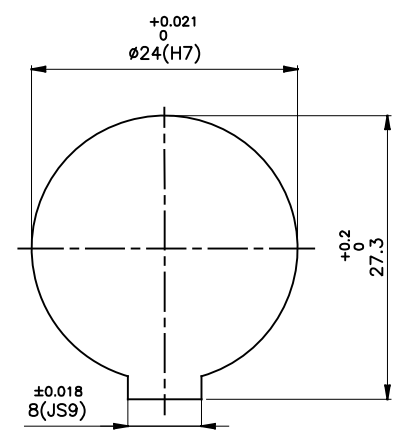
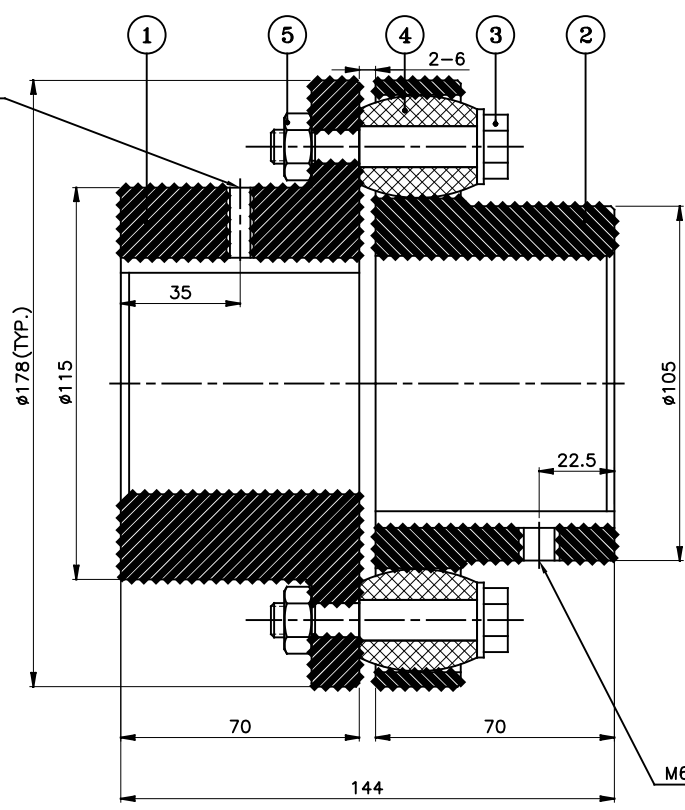
DRG. No.: -

This drawing / information / design is the property of Rathi Transpower Pvt. Ltd. It is confidential & must not be made public or copied without prior written authorization & is subjected to recall at any time. Acceptance of this drawing constitutes full agreement with these conditions

J I H G F E D C B A



DRIVE END



DRIVEN END


APPLICATION DETAILS	
APPLICATION	-
RATED POWER	-
RATED SPEED	-
RATED TORQUE	-
A.S.F.	-

COUPLING SPECIFICATIONS	
COUPLING RATING	6.7 kW @ 100 RPM
RATED TORQUE	0.63 kNm.
PEAK TORQUE	1.27 kNm.
MAX. SPEED	3800 rpm.
MAX. BORE	PIN HALF 75 mm
	BUSH HALF 70 mm
WEIGHT(Approx.)	14.05 Kg
INERTIA (WK ²)	0.056 Kgm ²

MAX. MISALIGNMENTS	
AXIAL DEFLECTION	± 2 mm.
ANGULAR DEFLECTION	1°
RADIAL DEFLECTION	0.5 mm

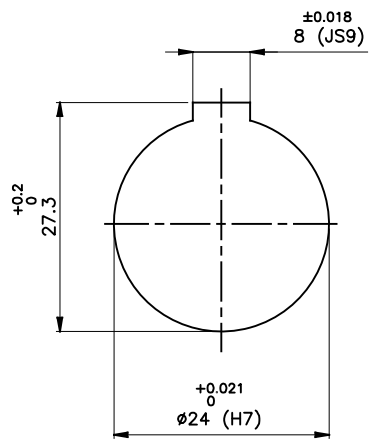
REV.	DMRN NO.	DESCRIPTION	REV. BY	APPD. BY	DATE

SR NO	DESCRIPTION	MATERIAL	QTY
5	NYLOCK NUT	NYLOCK NUT GR. 8	6
4	BUSH	NYLOCK NUT	6
3	PIN	EN-8D/15B25	6
2	BUSH HALF	CI IS-210 Gr.FG-260	1
1	PIN HALF	CI IS-210 Gr.FG-260	1

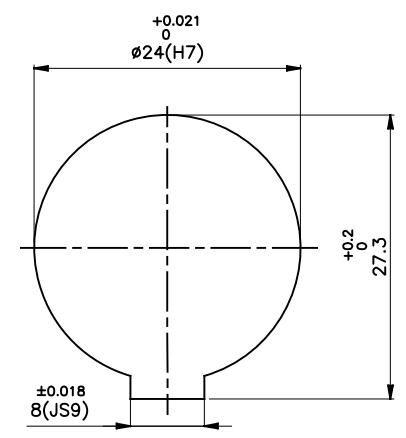
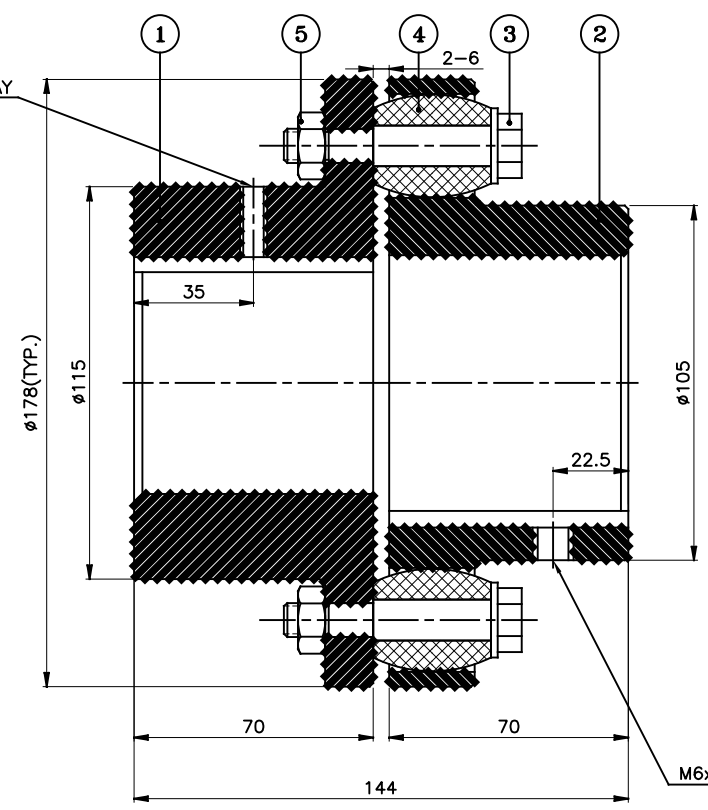
TITLE: RB-178-6 /----- CPLG.		MATERIAL: REFER TABLE	AUTHORITY	INITIALS	SIGN	DATE
CUSTOMER NAME:		APPROVED	-	-	-	-
SCALE: NTS		REF. No.:	-	-	-	-
 RATHI TRANSPOWER PVT LTD PUNE 411014		DRG. No.:	-	-	-	-

This drawing / information / design is the property of Rathi Transpower Pvt. Ltd. It is confidential & must not be made public or copied without prior written authorization & is subjected to recall at any time. Acceptance of this drawing constitutes full agreement with these conditions

J I H G F E D C B A



DRIVE END



DRIVEN END

APPLICATION DETAILS

APPLICATION	-
RATED POWER	-
RATED SPEED	-
RATED TORQUE	-
A.S.F.	-

COUPLING SPECIFICATIONS

COUPLING RATING	10.1 kW @ 100 RPM
RATED TORQUE	0.94 kNm.
PEAK TORQUE	1.89 kNm.
MAX. SPEED	3800 rpm.
MAX. BORE	PIN HALF 75 mm BUSH HALF 70 mm
WEIGHT(Approx.)	14.05 Kg
INERTIA (WK ²)	0.056 Kgm ²

COUPLING HUBS DYNAMICALLY BALANCED TO GR. 6.3 AS PER ISO: 1940-1.

MAX. MISALIGNMENTS

AXIAL DEFLECTION	± 2 mm.
ANGULAR DEFLECTION	1°
RADIAL DEFLECTION	0.5 mm

5	NYLOCK NUT	NYLOCK NUT GR. 8	6
4	BUSH	POLYURETHANE	6
3	PIN	EN-8D/15B25	6
2	BUSH HALF	CI IS-210 Gr.FG-260	1
1	PIN HALF	CI IS-210 Gr.FG-260	1
SR NO	DESCRIPTION	MATERIAL	QTY

REV.	DMRN NO.	DESCRIPTION	REV. BY	APPD. BY	DATE

TITLE: **RB-178-6 /----- CPLG.** MATERIAL: REFER TABLE

CUSTOMER NAME: _____

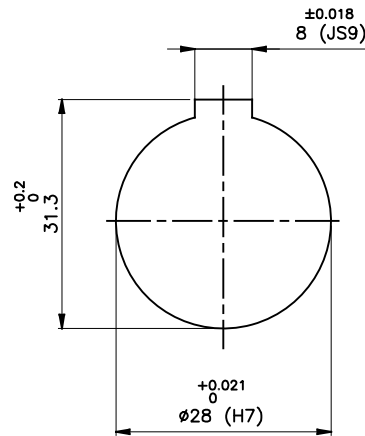
AUTHORITY	INITIALS	SIGN	DATE
DRAWN	-	-	-
CHECKED	-	-	-
APPROVED	-	-	-

SCALE: NTS REF. No.: _____

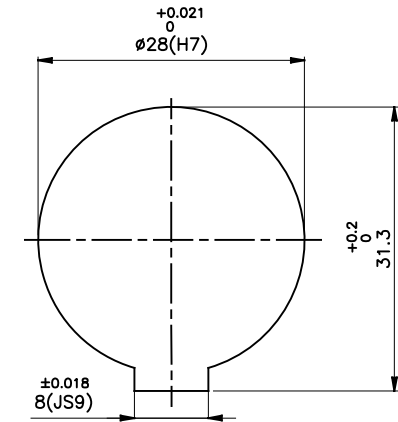
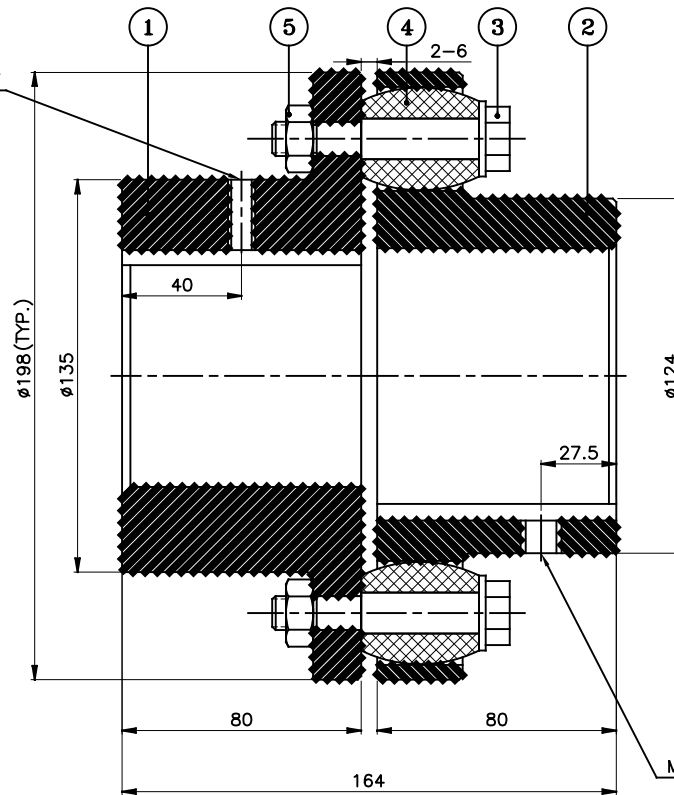
RAIHI RATHI TRANSPower PVT LTD PUNE 411014 DRG. No.: _____

This drawing / information / design is the property of Rathi Transpower Pvt. Ltd. It is confidential & must not be made public or copied without prior written authorization & is subjected to recall at any time. Acceptance of this drawing constitutes full agreement with these conditions

J I H G F E D C B A



DRIVE END



DRIVEN END

APPLICATION DETAILS

APPLICATION	-
RATED POWER	-
RATED SPEED	-
RATED TORQUE	-
A.S.F.	-

COUPLING SPECIFICATIONS

COUPLING RATING	33 kW @ 100 RPM
RATED TORQUE	3.15 kNm.
PEAK TORQUE	6.30 kNm.
MAX. SPEED	3400 rpm.
MAX. BORE	PIN HALF 90 mm BUSH HALF 80 mm
WEIGHT (Approx.)	19.3 Kg
INERTIA (WK ²)	0.0924 Kg ^m ²

COUPLING HUBS DYNAMICALLY BALANCED TO GR. 6.3 AS PER ISO: 1940-1.

MAX. MISALIGNMENTS

AXIAL DEFLECTION	± 2 mm.
ANGULAR DEFLECTION	1°
RADIAL DEFLECTION	0.5 mm

5	NYLOCK NUT	NYLOCK NUT GR. 8	10
4	BUSH	H TRANS	10
3	PIN	EN-8D/15B25	10
2	BUSH HALF	CI IS-210 Gr.FG-260	1
1	PIN HALF	CI IS-210 Gr.FG-260	1
SR NO	DESCRIPTION	MATERIAL	QTY

REV.	DMRN NO.	DESCRIPTION	REV. BY	APPD. BY	DATE

TITLE: **RB-198-10 /----- CPLG.** MATERIAL: REFER TABLE

CUSTOMER NAME: _____

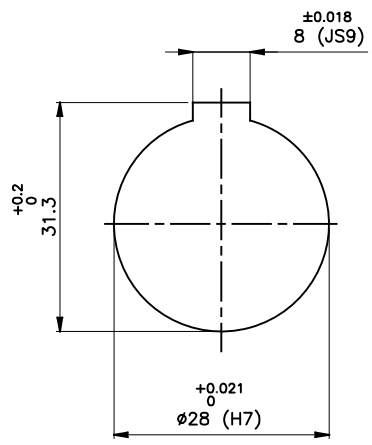
AUTHORITY	INITIALS	SIGN	DATE
DRAWN	-	-	-
CHECKED	-	-	-
APPROVED	-	-	-

SCALE: NTS REF. No.: _____

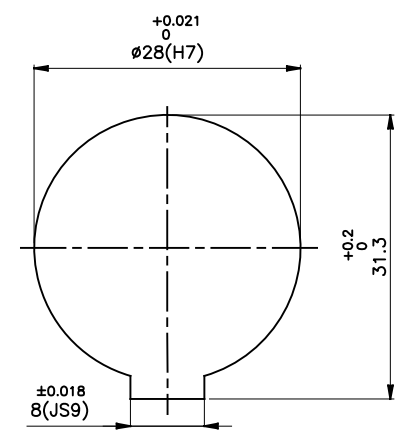
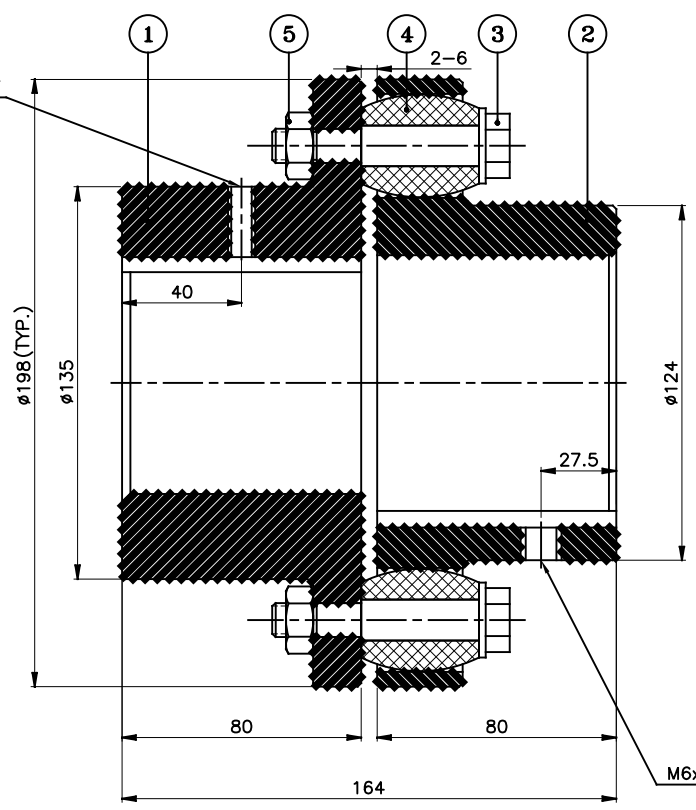
RAHI RATHI TRANSPower PVT LTD PUNE 411014 DRG. No.: _____

This drawing / information / design is the property of Rathi Transpower Pvt. Ltd. It is confidential & must not be made public or copied without prior written authorization & is subjected to recall at any time. Acceptance of this drawing constitutes full agreement with these conditions

J I H G F E D C B A



DRIVE END



DRIVEN END

M6x1P SET SCREW ON KEYWAY

APPLICATION DETAILS

APPLICATION	-
RATED POWER	-
RATED SPEED	-
RATED TORQUE	-
A.S.F.	-

COUPLING SPECIFICATIONS

COUPLING RATING	13 kW @ 100 RPM
RATED TORQUE	1.24 kNm.
PEAK TORQUE	2.48 kNm.
MAX. SPEED	3400 rpm.
MAX. BORE	PIN HALF 90 mm BUSH HALF 80 mm
WEIGHT (Approx.)	19.3 Kg
INERTIA (WK ²)	0.0924 Kgm ²

COUPLING HUBS DYNAMICALLY BALANCED TO GR. 6.3 AS PER ISO: 1940-1.

MAX. MISALIGNMENTS

AXIAL DEFLECTION	± 2 mm.
ANGULAR DEFLECTION	1°
RADIAL DEFLECTION	0.5 mm

5	NYLOCK NUT	NYLOCK NUT GR. 8	10
4	BUSH	STEEL BUSH	10
3	PIN	EN-8D/15B25	10
2	BUSH HALF	CI IS-210 Gr.FG-260	1
1	PIN HALF	CI IS-210 Gr.FG-260	1
SR NO	DESCRIPTION	MATERIAL	QTY

REV.	DMRN NO.	DESCRIPTION	REV. BY	APPD. BY	DATE

TITLE: **RB-198-10 /----- CPLG.**

MATERIAL: REFER TABLE

CUSTOMER NAME:

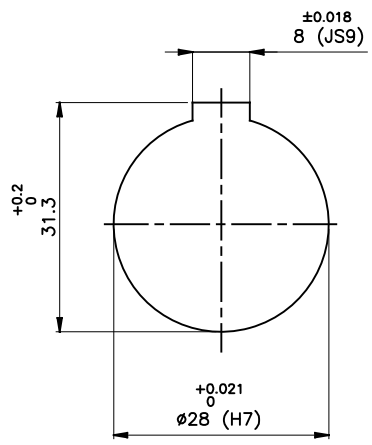
SCALE: NTS REF. No.: -

RATHI RATHI TRANSPower PVT LTD PUNE 411014

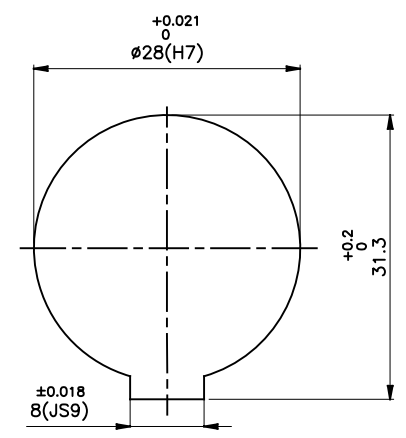
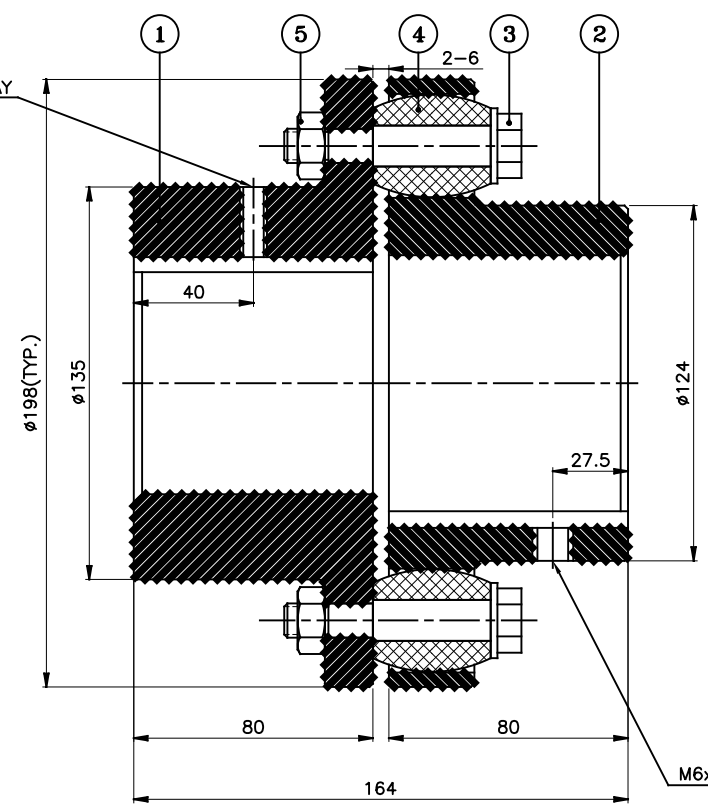
DRG. No.: -

This drawing / information / design is the property of Rathi Transpower Pvt. Ltd. It is confidential & must not be made public or copied without prior written authorization & is subjected to recall at any time. Acceptance of this drawing constitutes full agreement with these conditions

J I H G F E D C B A



DRIVE END



DRIVEN END

APPLICATION DETAILS			
APPLICATION	-		
RATED POWER	-		
RATED SPEED	-		
RATED TORQUE	-		
A.S.F.	-		
COUPLING SPECIFICATIONS			
COUPLING RATING	19.5 kW @ 100 RPM		
RATED TORQUE	1.86 kNm.		
PEAK TORQUE	3.72 kNm.		
MAX. SPEED	3400 rpm.		
MAX. BORE	PIN HALF	90 mm	
	BUSH HALF	80 mm	
WEIGHT(Approx.)	19.3 Kg		
INERTIA (WK ²)	0.0924 Kg ^m ²		
COUPLING HUBS DYNAMICALLY BALANCED TO GR. 6.3 AS PER ISO: 1940-1.			
MAX. MISALIGNMENTS			
AXIAL DEFLECTION	± 2 mm.		
ANGULAR DEFLECTION	1°		
RADIAL DEFLECTION	0.5 mm		

SR NO	DESCRIPTION	MATERIAL	QTY
5	NYLOCK NUT	NYLOCK NUT GR. 8	10
4	BUSH	POLYURETHANE	10
3	PIN	EN-8D/15B25	10
2	BUSH HALF	CI IS-210 Gr.FG-260	1
1	PIN HALF	CI IS-210 Gr.FG-260	1

REV.	DMRN NO.	DESCRIPTION	REV. BY	APPD. BY	DATE

TITLE: **RB-198-10 /----- CPLG.**

MATERIAL: REFER TABLE

CUSTOMER NAME: _____

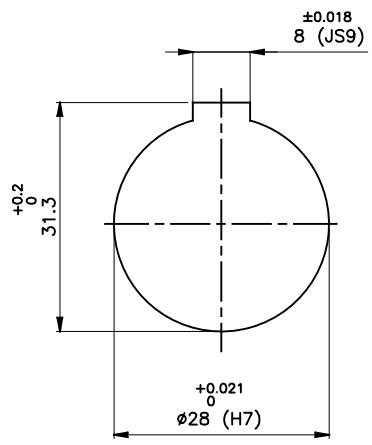
SCALE: NTS REF. No.: _____

RATHI RATHI TRANSPower PVT LTD PUNE 411014

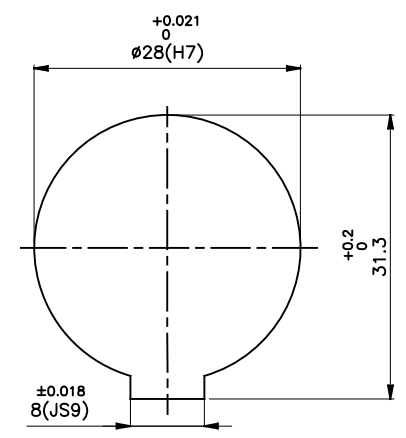
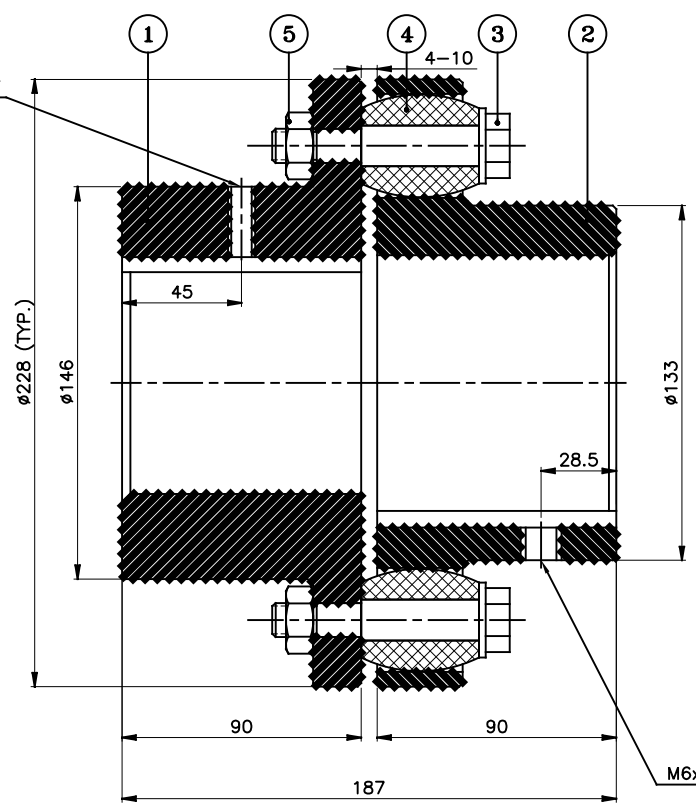
DRG. No.: _____

This drawing / information / design is the property of Rathi Transpower Pvt. Ltd. It is confidential & must not be made public or copied without prior written authorization & is subjected to recall at any time. Acceptance of this drawing constitutes full agreement with these conditions

J I H G F E D C B A



DRIVE END



DRIVEN END

APPLICATION DETAILS

APPLICATION	-
RATED POWER	-
RATED SPEED	-
RATED TORQUE	-
A.S.F.	-

COUPLING SPECIFICATIONS

COUPLING RATING	53 kW @ 100 RPM
RATED TORQUE	5.06 kNm.
PEAK TORQUE	10.12 kNm.
MAX. SPEED	3000 rpm.
MAX. BORE	PIN HALF 100 mm
	BUSH HALF 90 mm
WEIGHT(Approx.)	27.17 Kg
INERTIA (WK ²)	0.15 Kgm ²

COUPLING HUBS DYNAMICALLY BALANCED TO GR. 6.3 AS PER ISO: 1940-1.

MAX. MISALIGNMENTS

AXIAL DEFLECTION	± 3 mm.
ANGULAR DEFLECTION	1'
RADIAL DEFLECTION	0.6 mm

5	NYLOCK NUT	NYLOCK NUT GR. 8	11
4	BUSH	H TRANS	11
3	PIN	EN-8D/15B25	11
2	BUSH HALF	CI IS-210 Gr.FG-260	1
1	PIN HALF	CI IS-210 Gr.FG-260	1
SR NO	DESCRIPTION	MATERIAL	QTY

REV.	DMRN NO.	DESCRIPTION	REV. BY	APPD. BY	DATE

TITLE: **RB-228-11 ---- CPLG.** MATERIAL: REFER TABLE

CUSTOMER NAME: _____

APPROVED: _____

SCALE: NTS REF. No.: _____

RATHI RATHI TRANSPOWER PVT LTD PUNE 411014 DRG. No.: _____

This drawing / information / design is the property of Rathi Transpower Pvt. Ltd. It is confidential & must not be made public or copied without prior written authorization & is subjected to recall at any time. Acceptance of this drawing constitutes full agreement with these conditions

J I H G F E D C B A

8

7

6

5

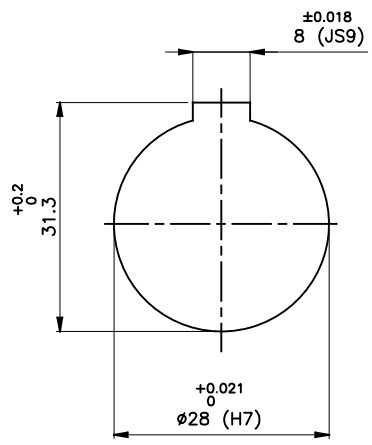
4

3

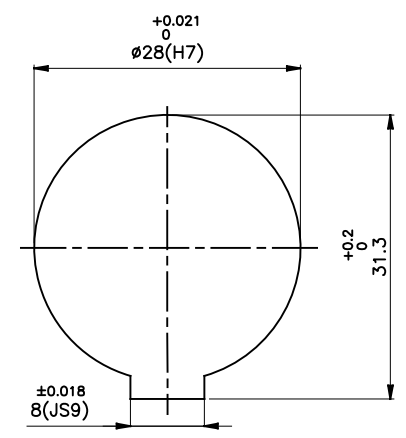
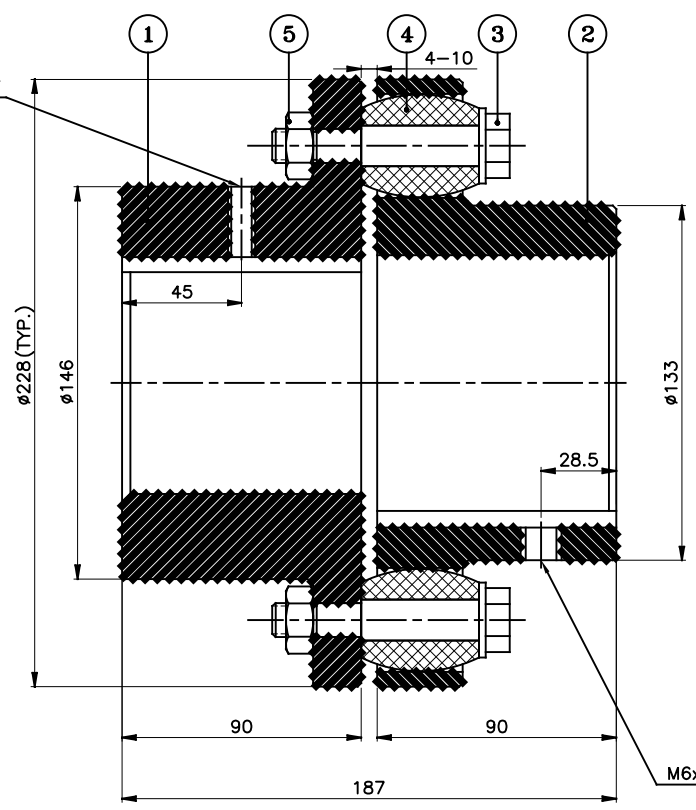
2

1

24



DRIVE END



DRIVEN END

APPLICATION DETAILS	
APPLICATION	-
RATED POWER	-
RATED SPEED	-
RATED TORQUE	-
A.S.F.	-

COUPLING SPECIFICATIONS	
COUPLING RATING	21 kW @ 100 RPM
RATED TORQUE	2.0 kNm.
PEAK TORQUE	4.0 kNm.
MAX. SPEED	3000 rpm.
MAX. BORE	PIN HALF 100 mm
	BUSH HALF 90 mm
WEIGHT(Approx.)	27.17 Kg
INERTIA (WK ²)	0.15 Kgm ²

MAX. MISALIGNMENTS	
AXIAL DEFLECTION	± 3 mm.
ANGULAR DEFLECTION	1'
RADIAL DEFLECTION	0.6 mm

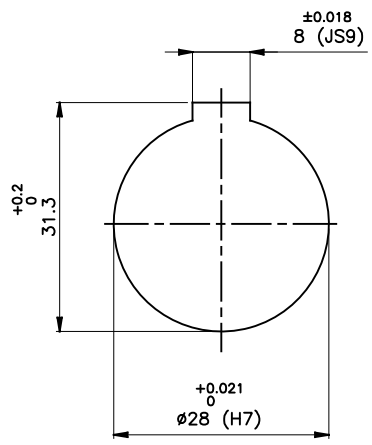
SR NO	DESCRIPTION	MATERIAL	QTY
5	NYLOCK NUT	NYLOCK NUT GR. 8	11
4	BUSH	STAINLESS STEEL	11
3	PIN	EN-8D/15B25	11
2	BUSH HALF	CI IS-210 Gr.FG-260	1
1	PIN HALF	CI IS-210 Gr.FG-260	1

REV.	DMRN NO.	DESCRIPTION	REV. BY	APPD. BY	DATE

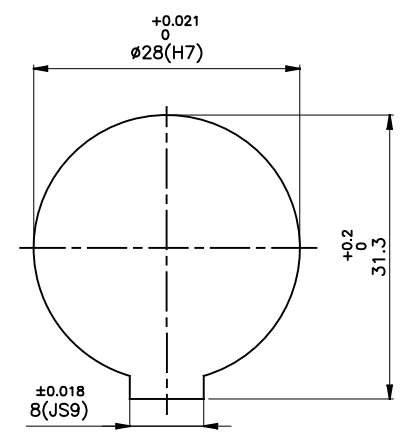
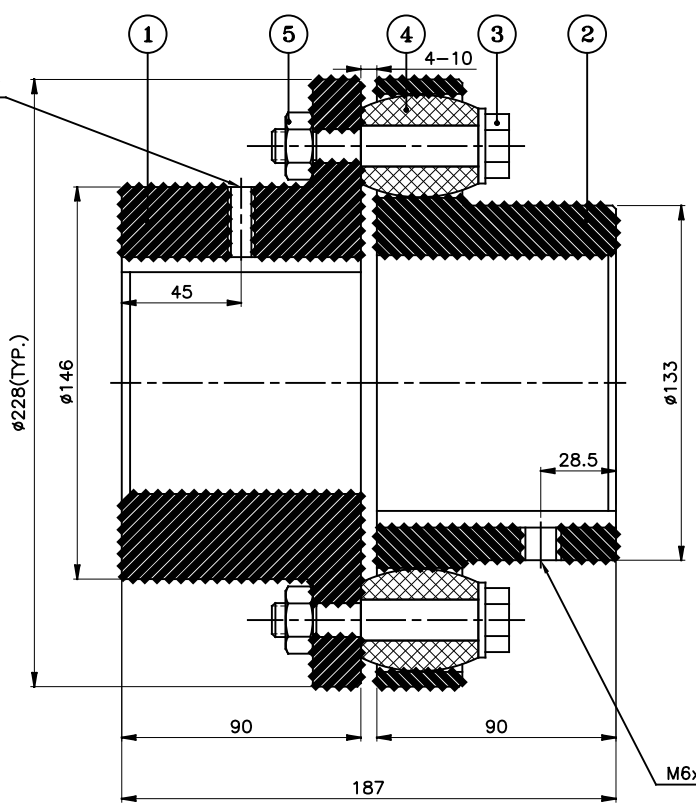
TITLE: RB-228-11 ---- CPLG.		MATERIAL: REFER TABLE		AUTHORITY	INITIALS	SIGN	DATE
CUSTOMER NAME:				DRAWN	-	-	-
				CHECKED	-	-	-
				APPROVED	-	-	-
				SCALE: NTS	REF. No.:	-	
						-	
						DRG. No.: -	
				RATHI TRANSPower PVT LTD		PUNE 411014	

This drawing / information / design is the property of Rathi Transpower Pvt. Ltd. It is confidential & must not be made public or copied without prior written authorization & is subjected to recall at any time. Acceptance of this drawing constitutes full agreement with these conditions

J I H G F E D C B A



DRIVE END



DRIVEN END

APPLICATION DETAILS

APPLICATION	-
RATED POWER	-
RATED SPEED	-
RATED TORQUE	-
A.S.F.	-

COUPLING SPECIFICATIONS

COUPLING RATING	31.5 kW @ 100 RPM
RATED TORQUE	3 kNm.
PEAK TORQUE	6 kNm.
MAX. SPEED	3000 rpm.
MAX. BORE	PIN HALF 100 mm
	BUSH HALF 90 mm
WEIGHT(Approx.)	27.17 Kg
INERTIA (WK ²)	0.15 Kgm ²

COUPLING HUBS DYNAMICALLY BALANCED TO GR. 6.3 AS PER ISO: 1940-1.

MAX. MISALIGNMENTS

AXIAL DEFLECTION	± 3 mm.
ANGULAR DEFLECTION	1'
RADIAL DEFLECTION	0.6 mm

5	NYLOCK NUT	NYLOCK NUT GR. 8	11
4	BUSH	POLYURETHANE	11
3	PIN	EN-8D/15B25	11
2	BUSH HALF	CI IS-210 Gr.FG-260	1
1	PIN HALF	CI IS-210 Gr.FG-260	1
SR NO	DESCRIPTION	MATERIAL	QTY

REV.	DMRN NO.	DESCRIPTION	REV. BY	APPD. BY	DATE

TITLE: **RB-228-11 ---- CPLG.** MATERIAL: REFER TABLE

CUSTOMER NAME: _____

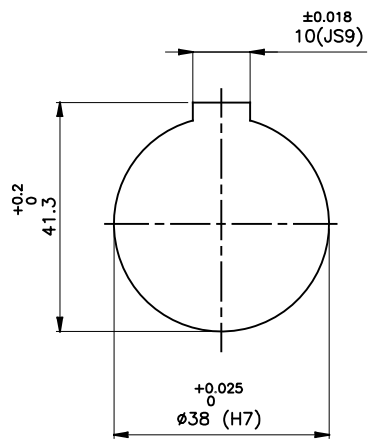
APPROVED: _____

SCALE: NTS REF. No.: _____

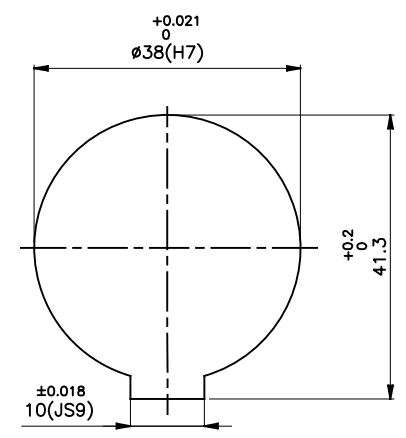
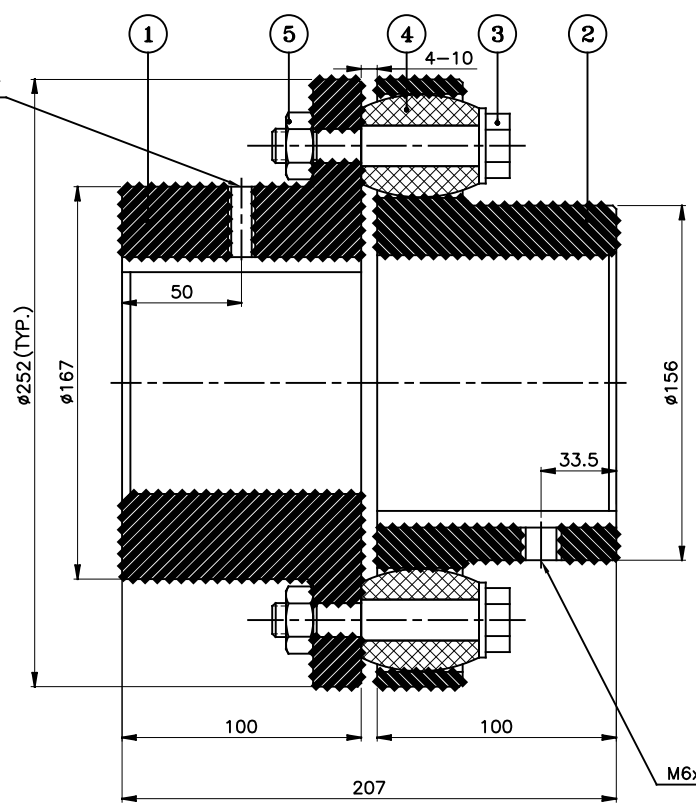
RATHI RATHI TRANSPower PVT LTD PUNE 411014 DRG. No.: _____

This drawing / information / design is the property of Rathi Transpower Pvt. Ltd. It is confidential & must not be made public or copied without prior written authorization & is subjected to recall at any time. Acceptance of this drawing constitutes full agreement with these conditions

J I H G F E D C B A



DRIVE END



DRIVEN END

APPLICATION DETAILS

APPLICATION	-
RATED POWER	-
RATED SPEED	-
RATED TORQUE	-
A.S.F.	-

COUPLING SPECIFICATIONS

COUPLING RATING	80 kW @ 100 RPM
RATED TORQUE	7.63 kNm.
PEAK TORQUE	15.27 kNm.
MAX. SPEED	2700 rpm.
MAX. BORE	PIN HALF 115 mm BUSH HALF 105 mm
WEIGHT (Approx.)	37.17 Kg
INERTIA (WK ²)	0.26 Kgm ²

COUPLING HUBS DYNAMICALLY BALANCED TO GR. 6.3 AS PER ISO: 1940-1.

MAX. MISALIGNMENTS

AXIAL DEFLECTION	±3 mm.
ANGULAR DEFLECTION	1°
RADIAL DEFLECTION	0.6 mm

5	NYLOCK NUT	NYLOCK NUT GR. 8	12
4	BUSH	H TRANS	12
3	PIN	EN-8D/15B25	12
2	BUSH HALF	CI IS-210 Gr.FG-260	1
1	PIN HALF	CI IS-210 Gr.FG-260	1
SR NO	DESCRIPTION	MATERIAL	QTY

REV.	DMRN NO.	DESCRIPTION	REV. BY	APPD. BY	DATE

TITLE: **RB-252-12 /----- CPLG.** MATERIAL: REFER TABLE

CUSTOMER NAME: _____

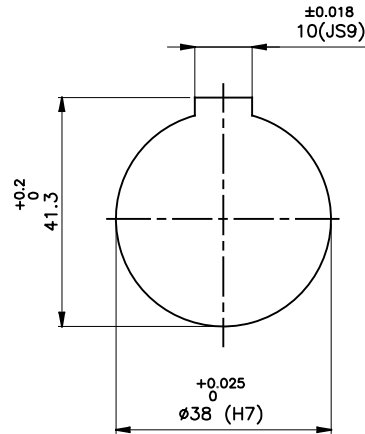
AUTHORITY	INITIALS	SIGN	DATE
DRAWN	-	-	-
CHECKED	-	-	-
APPROVED	-	-	-

SCALE: NTS REF. No.: _____

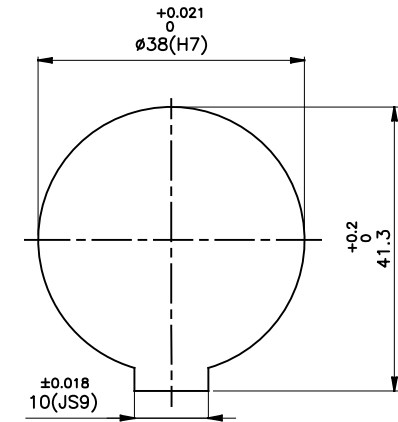
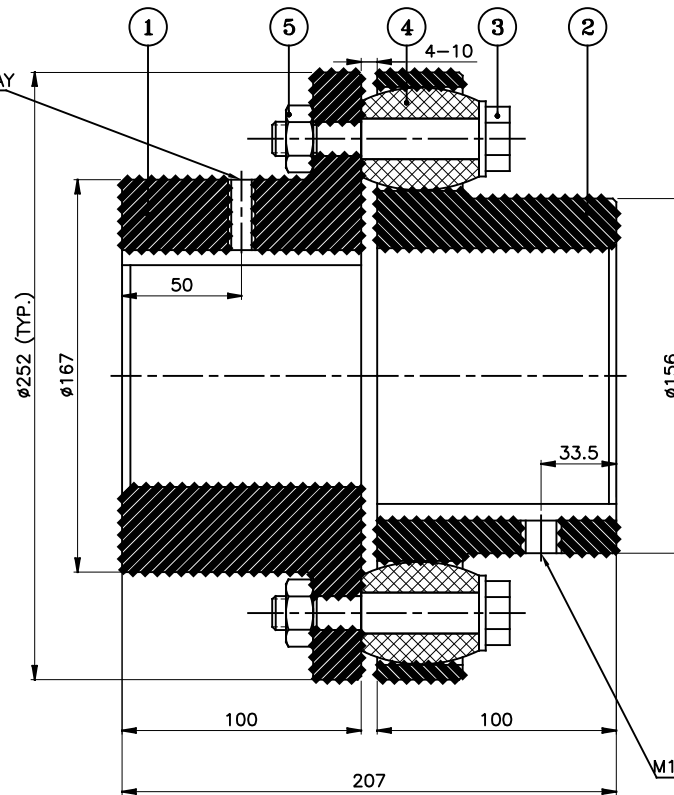
RATHI RATHI TRANSPOWER PVT LTD PUNE 411014 DRG. No.: _____

This drawing / information / design is the property of Rathi Transpower Pvt. Ltd. It is confidential & must not be made public or copied without prior written authorization & is subjected to recall at any time. Acceptance of this drawing constitutes full agreement with these conditions

J I H G F E D C B A



DRIVE END



DRIVEN END

M10x1.5P SET SCREW ON KEYWAY

APPLICATION DETAILS

APPLICATION	-
RATED POWER	-
RATED SPEED	-
RATED TORQUE	-
A.S.F.	-

COUPLING SPECIFICATIONS

COUPLING RATING	32 kW @ 100 RPM
RATED TORQUE	3.0 kNm.
PEAK TORQUE	6 kNm.
MAX. SPEED	2700 rpm.
MAX. BORE	PIN HALF 115 mm
	BUSH HALF 105 mm
WEIGHT(Approx.)	37.17 Kg
INERTIA (WK ²)	0.26 Kgm ²

COUPLING HUBS DYNAMICALLY BALANCED TO GR. 6.3 AS PER ISO: 1940-1.

MAX. MISALIGNMENTS

AXIAL DEFLECTION	±3 mm.
ANGULAR DEFLECTION	1°
RADIAL DEFLECTION	0.6 mm

5	NYLOCK NUT	NYLOCK NUT GR. 8	12
4	BUSH	NATURAL RUBBER	12
3	PIN	EN-8D/15B25	12
2	BUSH HALF	CI IS-210 Gr.FG-260	1
1	PIN HALF	CI IS-210 Gr.FG-260	1
SR NO	DESCRIPTION	MATERIAL	QTY

REV.	DMRN NO.	DESCRIPTION	REV. BY	APPD. BY	DATE

TITLE: **RB-252-12 /----- CPLG.**

MATERIAL: REFER TABLE

CUSTOMER NAME: _____

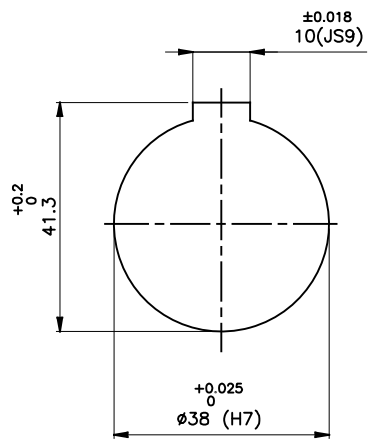
SCALE: NTS REF. No.: _____

RATHI RATHI TRANSPOWER PVT LTD PUNE 411014

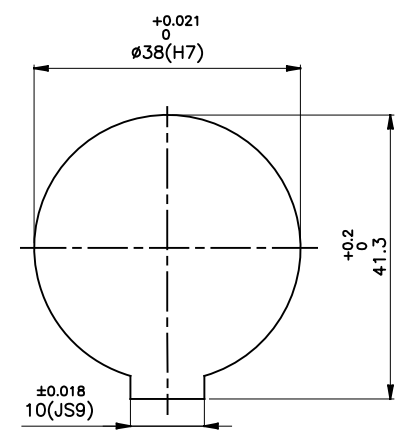
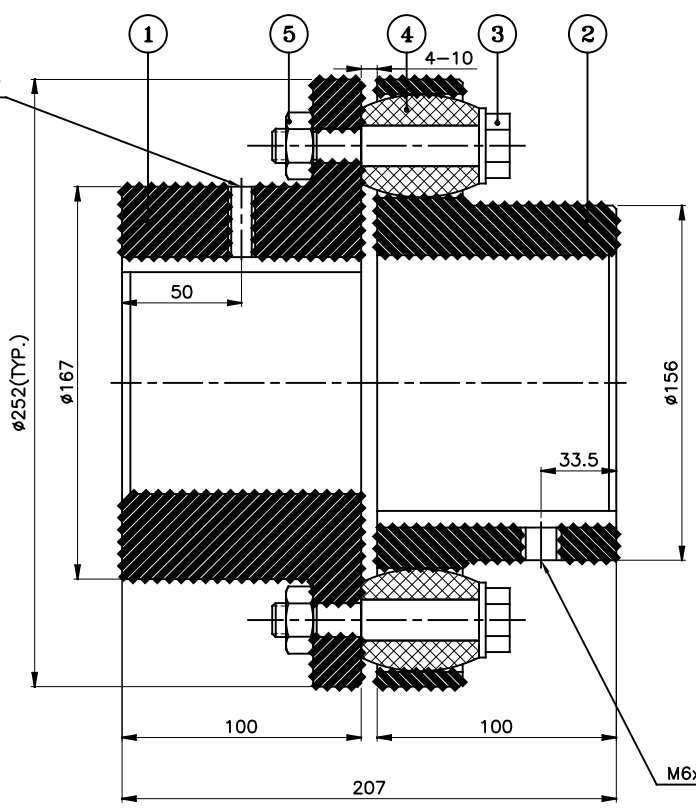
DRG. No.: _____

This drawing / information / design is the property of Rathi Transpower Pvt. Ltd. It is confidential & must not be made public or copied without prior written authorization & is subjected to recall at any time. Acceptance of this drawing constitutes full agreement with these conditions

J I H G F E D C B A



DRIVE END



DRIVEN END

M6x1P SET SCREW ON KEYWAY

APPLICATION DETAILS	
APPLICATION	-
RATED POWER	-
RATED SPEED	-
RATED TORQUE	-
A.S.F.	-

COUPLING SPECIFICATIONS	
COUPLING RATING	48 kW @ 100 RPM
RATED TORQUE	4.5 kNm.
PEAK TORQUE	9 kNm.
MAX. SPEED	2700 rpm.
MAX. BORE	PIN HALF 115 mm BUSH HALF 105 mm
WEIGHT(Approx.)	37.17 Kg
INERTIA (WK ²)	0.26 Kgm ²

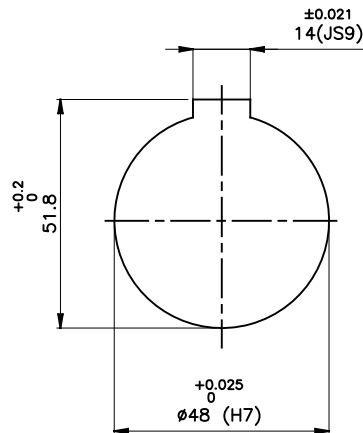
MAX. MISALIGNMENTS	
AXIAL DEFLECTION	±3 mm.
ANGULAR DEFLECTION	1°
RADIAL DEFLECTION	0.6 mm

SR NO	DESCRIPTION	MATERIAL	QTY
5	NYLOCK NUT	NYLOCK NUT GR. 8	12
4	BUSH	POLYURETHANE	12
3	PIN	EN-8D/15B25	12
2	BUSH HALF	CI IS-210 Gr.FG-260	1
1	PIN HALF	CI IS-210 Gr.FG-260	1

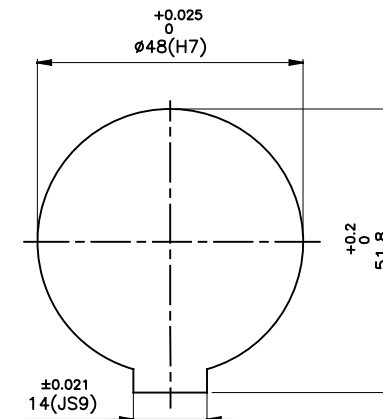
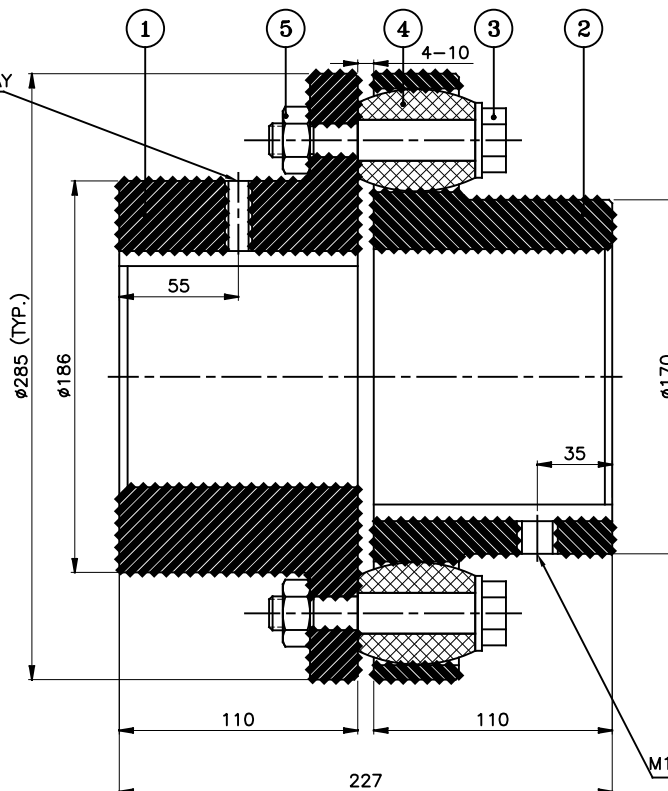
REV.	DMRN NO.	DESCRIPTION	REV. BY	APPD. BY	DATE

TITLE:	RB-252-12 /---- CPLG.	MATERIAL:	REFER TABLE	AUTHORITY	INITIALS	SIGN	DATE
CUSTOMER NAME:				DRAWN	-	-	-
				CHECKED	-	-	-
				APPROVED	-	-	-
				SCALE: NTS	REF. No.:	-	
						-	
				DRG. No.:		-	

This drawing / information / design is the property of Rathi Transpower Pvt. Ltd. It is confidential & must not be made public or copied without prior written authorization & is subjected to recall at any time. Acceptance of this drawing constitutes full agreement with these conditions



DRIVE END



DRIVEN END

APPLICATION DETAILS

APPLICATION	-
RATED POWER	-
RATED SPEED	-
RATED TORQUE	-
A.S.F.	-

COUPLING SPECIFICATIONS

COUPLING RATING	120 kW @ 100 RPM
RATED TORQUE	11.45 kNm.
PEAK TORQUE	22.91 kNm.
MAX. SPEED	2400 rpm.
MAX. BORE	PIN HALF 125 mm BUSH HALF 115 mm
WEIGHT (Approx.)	51.44 Kg
INERTIA (WK ²)	0.45 Kgm ²

COUPLING HUBS DYNAMICALLY BALANCED TO GR. 6.3 AS PER ISO: 1940-1.

MAX. MISALIGNMENTS

AXIAL DEFLECTION	±3 mm.
ANGULAR DEFLECTION	1°
RADIAL DEFLECTION	0.7 mm

5	NYLOCK NUT	HIGH TENSILE STEEL	11
4	BUSH	H TRANS	11
3	PIN	EN-8D/15B25	11
2	BUSH HALF	CI IS-210 Gr.FG-260	1
1	PIN HALF	CI IS-210 Gr.FG-260	1
SR NO	DESCRIPTION	MATERIAL	QTY

REV.	DMRN NO.	DESCRIPTION	REV. BY	APPD. BY	DATE

TITLE:	RB-285-11 /----- CPLG.	MATERIAL:	REFER TABLE	AUTHORITY	INITIALS	SIGN	DATE
CUSTOMER NAME:				DRAWN	-	-	-
				CHECKED	-	-	-
				APPROVED	-	-	-
				SCALE: NTS	REF. No.:	-	-

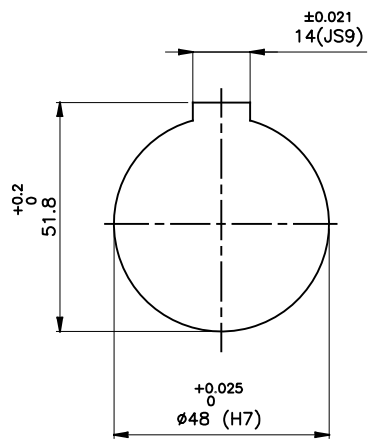


RATHI TRANSPower PVT LTD
PUNE 411014

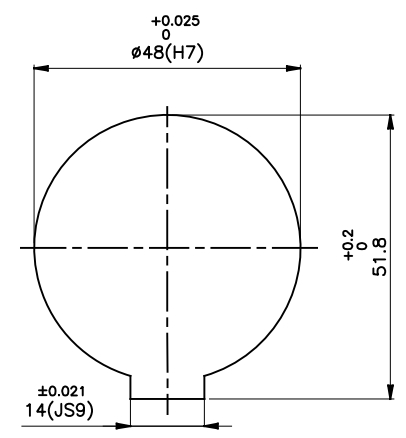
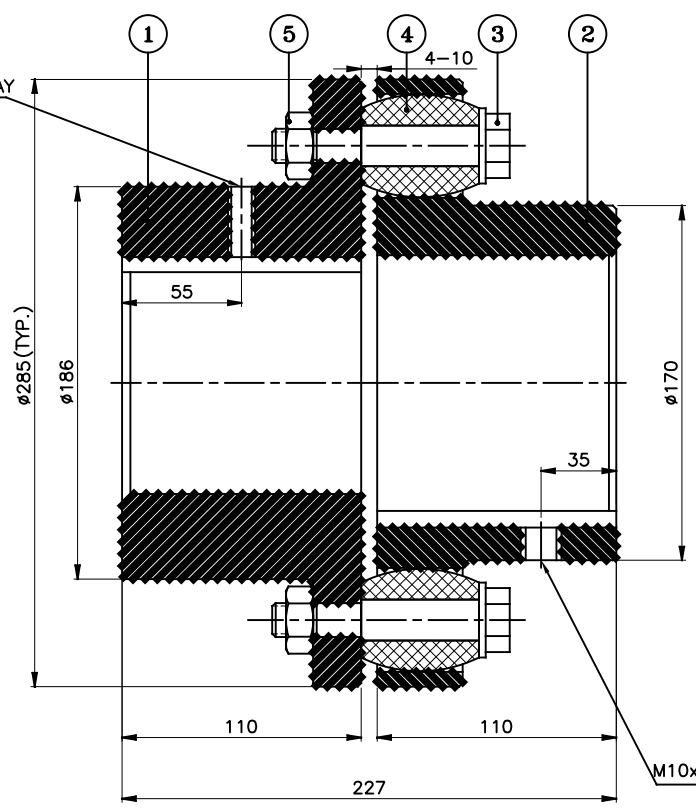
DRG. No.: -

This drawing / information / design is the property of Rathi Transpower Pvt. Ltd. It is confidential & must not be made public or copied without prior written authorization & is subjected to recall at any time. Acceptance of this drawing constitutes full agreement with these conditions

J I H G F E D C B A



DRIVE END



DRIVEN END

M10x1.5P SET SCREW ON KEYWAY

APPLICATION DETAILS		
APPLICATION	-	
RATED POWER	-	
RATED SPEED	-	
RATED TORQUE	-	
A.S.F.	-	
COUPLING SPECIFICATIONS		
COUPLING RATING	48 kW @ 100 RPM	
RATED TORQUE	4.58 kNm.	
PEAK TORQUE	9.16 kNm.	
MAX. SPEED	2400 rpm.	
MAX. BORE	PIN HALF	125 mm
	BUSH HALF	115 mm
WEIGHT(Approx.)	51.44 Kg	
INERTIA (WK ²)	0.45 Kgm ²	
COUPLING HUBS DYNAMICALLY BALANCED TO GR. 6.3 AS PER ISO: 1940-1.		
MAX. MISALIGNMENTS		
AXIAL DEFLECTION	±3 mm.	
ANGULAR DEFLECTION	1°	
RADIAL DEFLECTION	0.7 mm	

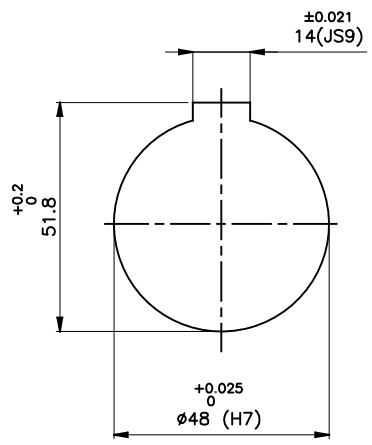
REV.	DMRN NO.	DESCRIPTION	REV. BY	APPD. BY	DATE

SR NO	DESCRIPTION	MATERIAL	QTY
5	NYLOCK NUT	NYLOCK NUT GR. 8	11
4	BUSH	STAINLESS STEEL	11
3	PIN	EN-8D/15B25	11
2	BUSH HALF	CI IS-210 Gr.FG-260	1
1	PIN HALF	CI IS-210 Gr.FG-260	1

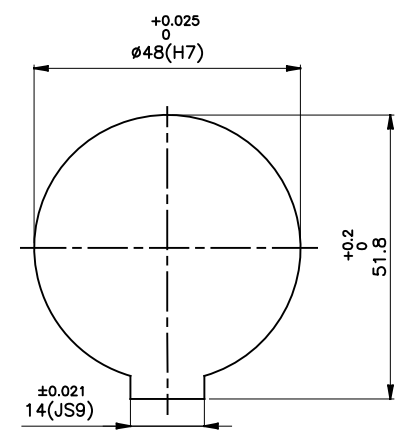
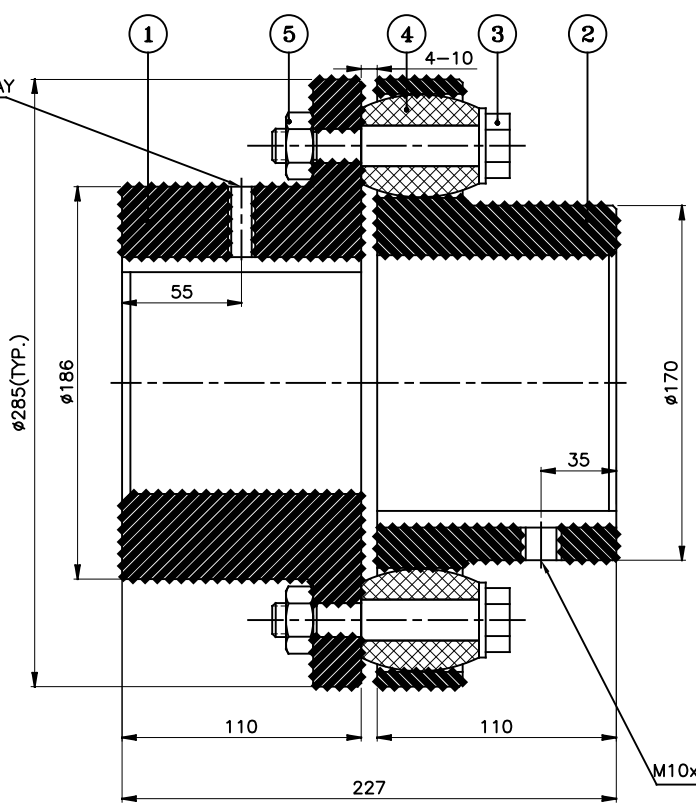
TITLE:		MATERIAL:		AUTHORITY	INITIALS	SIGN	DATE
RB-285-11 /----- CPLG.		REFER TABLE		DRAWN	-	-	-
CUSTOMER NAME:				CHECKED	-	-	-
				APPROVED	-	-	-
				SCALE: NTS	REF. No.:	-	
				RATHI TRANSPower PVT LTD		DRG. No.:	
PUNE 411014						-	

This drawing / information / design is the property of Rathi Transpower Pvt. Ltd. It is confidential & must not be made public or copied without prior written authorization & is subjected to recall at any time. Acceptance of this drawing constitutes full agreement with these conditions

J I H G F E D C B A



DRIVE END



DRIVEN END

APPLICATION DETAILS

APPLICATION	-
RATED POWER	-
RATED SPEED	-
RATED TORQUE	-
A.S.F.	-

COUPLING SPECIFICATIONS

COUPLING RATING	72 kW @ 100 RPM
RATED TORQUE	6.87 kNm.
PEAK TORQUE	13.74 kNm.
MAX. SPEED	2400 rpm.
MAX. BORE	PIN HALF 125 mm BUSH HALF 115 mm
WEIGHT (Approx.)	51.44 Kg
INERTIA (WK ²)	0.45 Kgm ²

COUPLING HUBS DYNAMICALLY BALANCED TO GR. 6.3 AS PER ISO: 1940-1.

MAX. MISALIGNMENTS

AXIAL DEFLECTION	±3 mm.
ANGULAR DEFLECTION	1°
RADIAL DEFLECTION	0.7 mm

5	NYLOCK NUT	NYLOCK NUT GR. 8	11
4	BUSH	POLYURETHANE	11
3	PIN	EN-8D/15B25	11
2	BUSH HALF	CI IS-210 Gr.FG-260	1
1	PIN HALF	CI IS-210 Gr.FG-260	1
SR NO	DESCRIPTION	MATERIAL	QTY

REV.	DMRN NO.	DESCRIPTION	REV. BY	APPD. BY	DATE

TITLE: **RB-285-11 /----- CPLG.**

MATERIAL: REFER TABLE

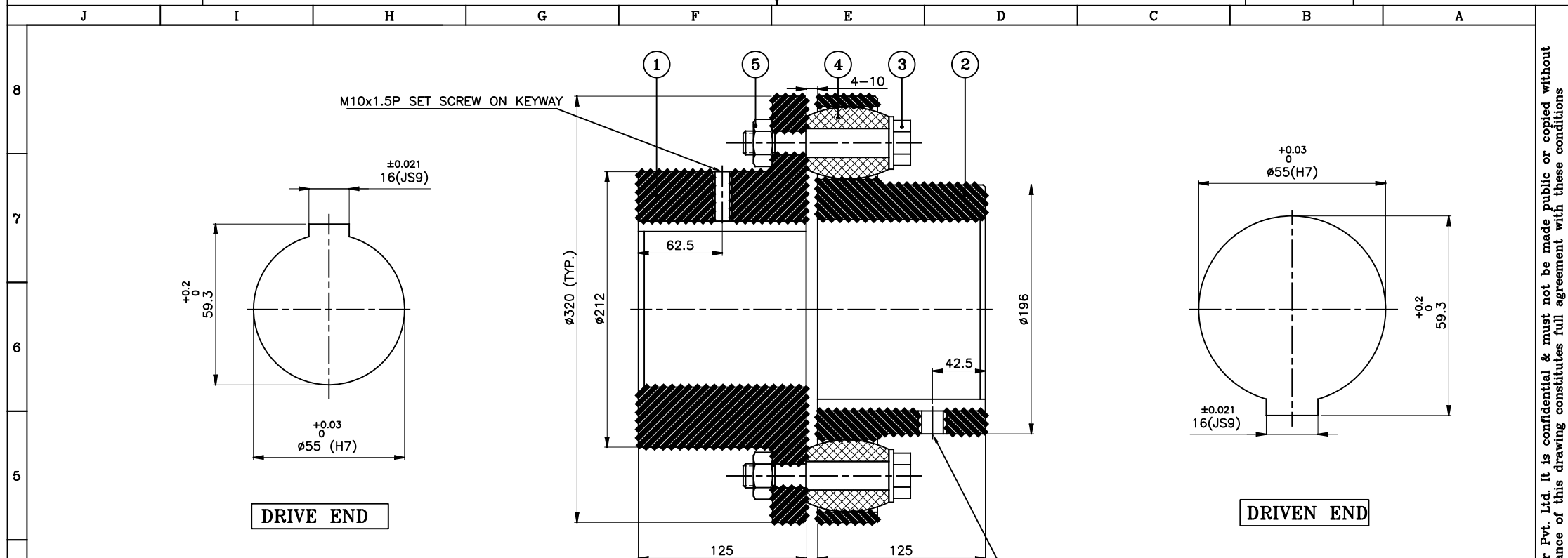
CUSTOMER NAME: _____

SCALE: NTS REF. No.: _____

RATHI RATHI TRANSPOWER PVT LTD PUNE 411014

DRG. No.: _____

This drawing / information / design is the property of Rathi Transpower Pvt. Ltd. It is confidential & must not be made public or copied without prior written authorization & is subjected to recall at any time. Acceptance of this drawing constitutes full agreement with these conditions



DRIVE END

DRIVEN END

SR NO	DESCRIPTION	MATERIAL	QTY
5	NYLOCK NUT	NYLOCK NUT GR. 8	12
4	BUSH	H TRANS	12
3	PIN	EN-8D/15B25	12
2	BUSH HALF	CI IS-210 Gr.FG-260	1
1	PIN HALF	CI IS-210 Gr.FG-260	1

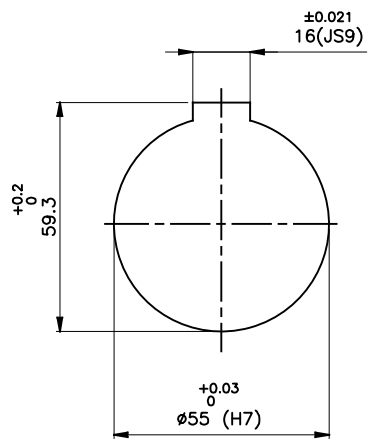
APPLICATION DETAILS		
APPLICATION	-	
RATED POWER	-	
RATED SPEED	-	
RATED TORQUE	-	
A.S.F.	-	
COUPLING SPECIFICATIONS		
COUPLING RATING	160 kW @ 100 RPM	
RATED TORQUE	15.27 kNm.	
PEAK TORQUE	30.55 kNm.	
MAX. SPEED	2100 rpm.	
MAX. BORE	PIN HALF	135 mm
	BUSH HALF	125 mm
WEIGHT (Approx.)	78.42 kg	
INERTIA (WK ²)	0.78 kgm ²	
COUPLING HUBS DYNAMICALLY BALANCED TO GR. 6.3 AS PER ISO: 1940-1.		
MAX. MISALIGNMENTS		
AXIAL DEFLECTION	±3 mm.	
ANGULAR DEFLECTION	1°	
RADIAL DEFLECTION	0.7 mm	

REV.	DMRN NO.	DESCRIPTION	REV. BY	APPD. BY	DATE

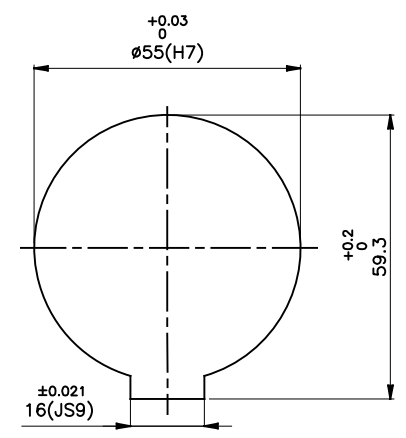
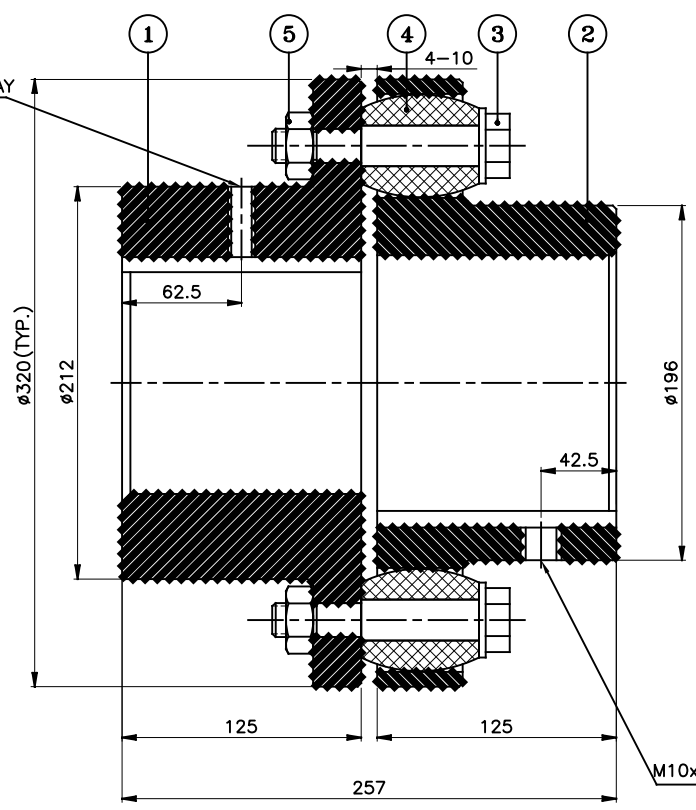
TITLE:		MATERIAL:		AUTHORITY	INITIALS	SIGN	DATE
RB-320-12 /----- CPLG.		REFER TABLE		DRAWN	-	-	-
CUSTOMER NAME:		APPROVED		CHECKED	-	-	-
SCALE: NTS		REF. No.:		-			
RATHI		RATHI TRANSPower PVT LTD		DRG. No.:		-	
PUNE 411014							

This drawing / information / design is the property of Rathi Transpower Pvt. Ltd. It is confidential & must not be made public or copied without prior written authorization & is subjected to recall at any time. Acceptance of this drawing constitutes full agreement with these conditions

J I H G F E D C B A



DRIVE END



DRIVEN END

APPLICATION DETAILS

APPLICATION	-
RATED POWER	-
RATED SPEED	-
RATED TORQUE	-
A.S.F.	-

COUPLING SPECIFICATIONS

COUPLING RATING	64 kW @ 100 RPM
RATED TORQUE	6.1 kNm.
PEAK TORQUE	12.2 kNm.
MAX. SPEED	2100 rpm.
MAX. BORE	PIN HALF 135 mm BUSH HALF 125 mm
WEIGHT (Approx.)	72.42 kg
INERTIA (WK ²)	0.75 kgm²

COUPLING HUBS DYNAMICALLY BALANCED TO GR. 6.3 AS PER ISO: 1940-1.

MAX. MISALIGNMENTS

AXIAL DEFLECTION	±3 mm.
ANGULAR DEFLECTION	1°
RADIAL DEFLECTION	0.7 mm

5	NYLOCK NUT	NYLOCK NUT GR. 8	12
4	BUSH	NATURAL RUBBER	12
3	PIN	EN-8D/15B25	12
2	BUSH HALF	CI IS-210 Gr.FG-260	1
1	PIN HALF	CI IS-210 Gr.FG-260	1
SR NO	DESCRIPTION	MATERIAL	QTY

REV.	DMRN NO.	DESCRIPTION	REV. BY	APPD. BY	DATE

TITLE: **RB-320-12 /----- CPLG.**

MATERIAL: REFER TABLE

CUSTOMER NAME: _____

SCALE: NTS REF. No.: _____

RATHI RATHI TRANSPOWER PVT LTD PUNE 411014

DRG. No.: _____

This drawing / information / design is the property of Rathi Transpower Pvt. Ltd. It is confidential & must not be made public or copied without prior written authorization & is subjected to recall at any time. Acceptance of this drawing constitutes full agreement with these conditions

J I H G F E D C B A

8

7

6

5

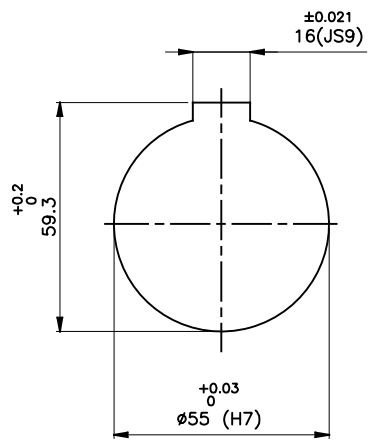
4

3

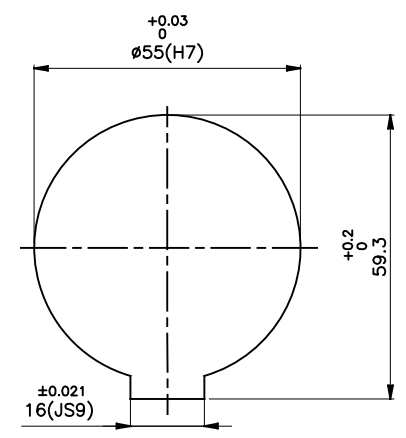
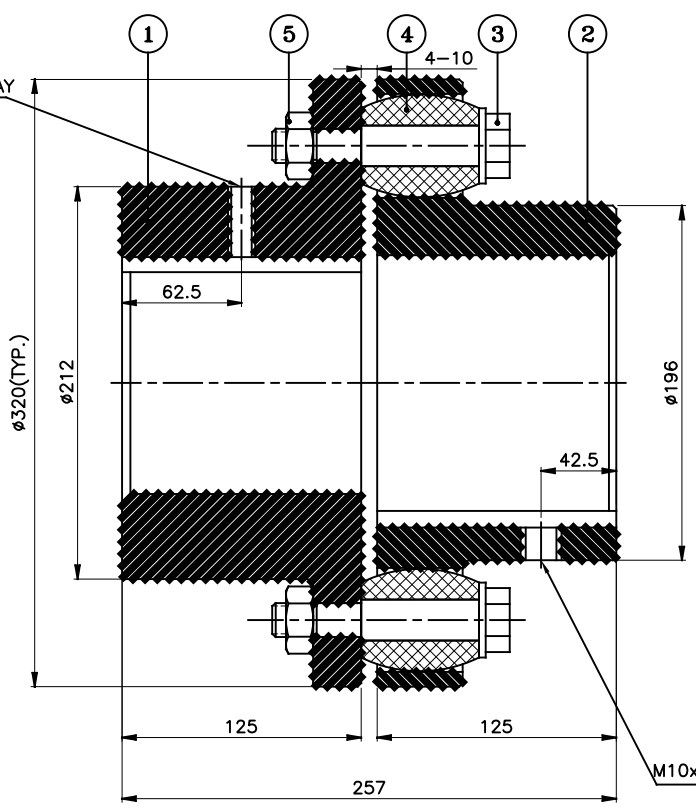
2

1

24



DRIVE END



DRIVEN END

APPLICATION DETAILS		
APPLICATION	-	
RATED POWER	-	
RATED SPEED	-	
RATED TORQUE	-	
A.S.F.	-	
COUPLING SPECIFICATIONS		
COUPLING RATING	96 kW @ 100 RPM	
RATED TORQUE	9.16 kNm.	
PEAK TORQUE	18.32 kNm.	
MAX. SPEED	2100 rpm.	
MAX. BORE	PIN HALF	135 mm
	BUSH HALF	125 mm
WEIGHT (Approx.)	72.42 kg	
INERTIA (WK ²)	0.75 kgm²	
COUPLING HUBS DYNAMICALLY BALANCED TO GR. 6.3 AS PER ISO: 1940-1.		
MAX. MISALIGNMENTS		
AXIAL DEFLECTION	±3 mm.	
ANGULAR DEFLECTION	1°	
RADIAL DEFLECTION	0.7 mm	

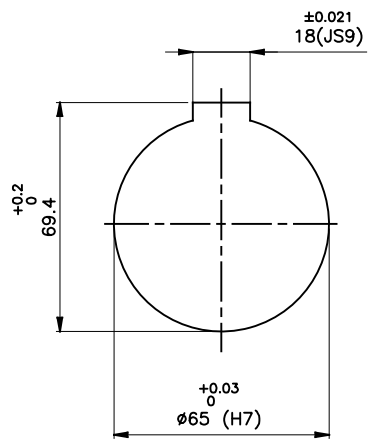
5	NYLOCK NUT	NYLOCK NUT GR. 8	12
4	BUSH	POLYURETHANE	12
3	PIN	EN-8D/15B25	12
2	BUSH HALF	CI IS-210 Gr.FG-260	1
1	PIN HALF	CI IS-210 Gr.FG-260	1
SR NO	DESCRIPTION	MATERIAL	QTY

REV.	DMRN NO.	DESCRIPTION	REV. BY	APPD. BY	DATE

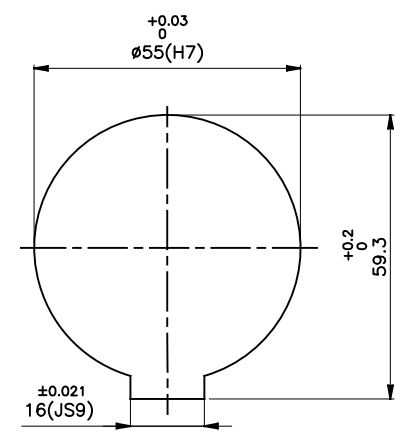
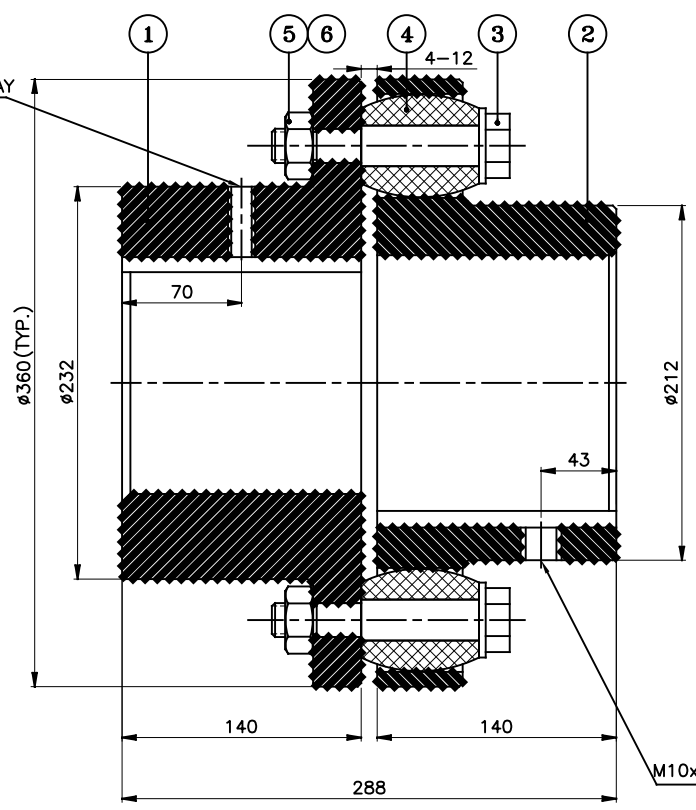
TITLE:	RB-320-12 /----- CPLG.	MATERIAL:	REFER TABLE	AUTHORITY	INITIALS	SIGN	DATE
CUSTOMER NAME:				DRAWN	-	-	-
				CHECKED	-	-	-
				APPROVED	-	-	-
				SCALE: NTS	REF. No.:	-	
						-	
				RATHI TRANSPOWER PVT LTD		DRG. No.:	
				PUNE 411014		-	

This drawing / information / design is the property of Rathi Transpower Pvt. Ltd. It is confidential & must not be made public or copied without prior written authorization & is subjected to recall at any time. Acceptance of this drawing constitutes full agreement with these conditions

J I H G F E D C B A



DRIVE END



DRIVEN END

M10x1.5P SET SCREW ON KEYWAY

APPLICATION DETAILS

APPLICATION	-
RATED POWER	-
RATED SPEED	-
RATED TORQUE	-
A.S.F.	-

COUPLING SPECIFICATIONS

COUPLING RATING	233 kW @ 100 RPM	
RATED TORQUE	22.24 kNm.	
PEAK TORQUE	44.49 kNm.	
MAX. SPEED	1900 rpm.	
MAX. BORE	PIN HALF	150 mm
	BUSH HALF	135 mm
WEIGHT (Approx.)	1000 kg	
INERTIA (WK ²)	1.40 kgm²	

COUPLING HUBS DYNAMICALLY BALANCED TO GR. 6.3 AS PER ISO: 1940-1.

MAX. MISALIGNMENTS

AXIAL DEFLECTION	±4 mm.
ANGULAR DEFLECTION	1°
RADIAL DEFLECTION	0.9 mm

5	NYLOCK NUT	NYLOCK NUT GR. 8	11
4	BUSH	H TRANS	11
3	PIN	EN-8D/15B25	11
2	BUSH HALF	CI IS-210 Gr.FG-260	1
1	PIN HALF	CI IS-210 Gr.FG-260	1
SR NO	DESCRIPTION	MATERIAL	QTY

REV.	DMRN NO.	DESCRIPTION	REV. BY	APPD. BY	DATE

TITLE: **RB-360-11 /----- CPLG.** MATERIAL: REFER TABLE

CUSTOMER NAME: _____

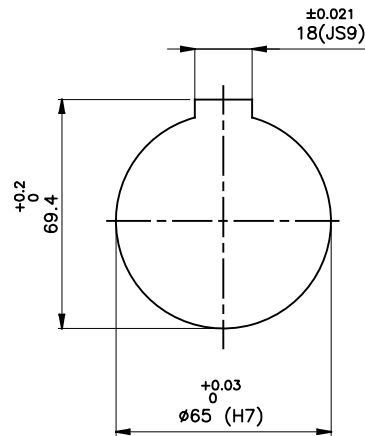
AUTHORITY	INITIALS	SIGN	DATE
DRAWN	-	-	-
CHECKED	-	-	-
APPROVED	-	-	-

SCALE: NTS REF. No.: _____

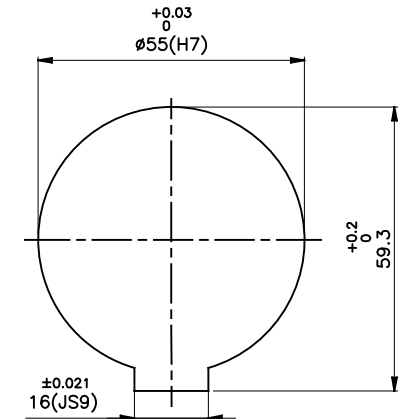
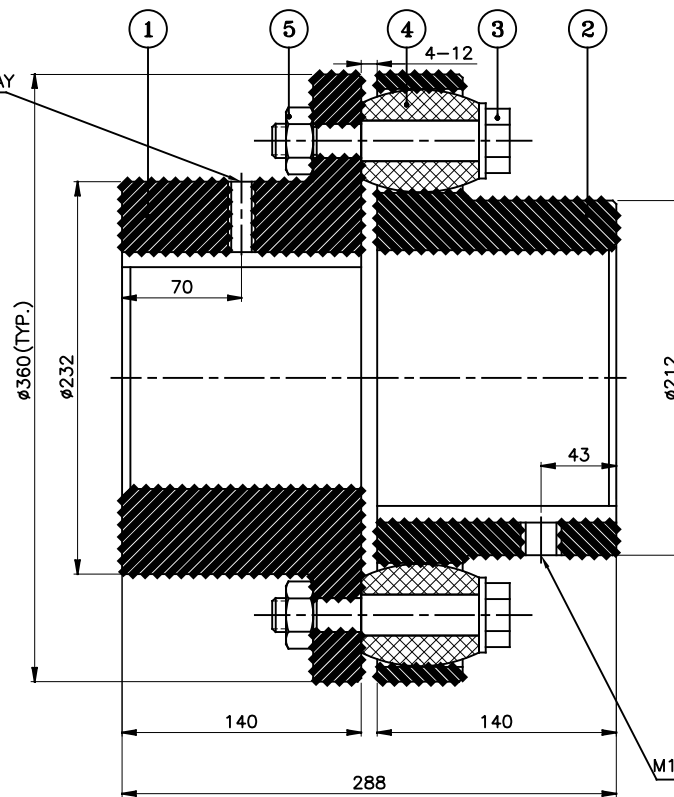
RATHI RATHI TRANSPower PVT LTD PUNE 411014 DRG. No.: _____

This drawing / information / design is the property of Rathi Transpower Pvt. Ltd. It is confidential & must not be made public or copied without prior written authorization & is subjected to recall at any time. Acceptance of this drawing constitutes full agreement with these conditions

J I H G F E D C B A



DRIVE END



DRIVEN END

M10x1.5P SET SCREW ON KEYWAY

APPLICATION DETAILS

APPLICATION	-
RATED POWER	-
RATED SPEED	-
RATED TORQUE	-
A.S.F.	-

COUPLING SPECIFICATIONS

COUPLING RATING	93 kW @ 100 RPM
RATED TORQUE	8.87 kNm.
PEAK TORQUE	17.74 kNm.
MAX. SPEED	1900 rpm.
MAX. BORE	PIN HALF 150 mm BUSH HALF 135 mm
WEIGHT (Approx.)	1000 kg
INERTIA (WK ²)	1.40 kgm ²

COUPLING HUBS DYNAMICALLY BALANCED TO GR. 6.3 AS PER ISO: 1940-1.

MAX. MISALIGNMENTS

AXIAL DEFLECTION	±4 mm.
ANGULAR DEFLECTION	1°
RADIAL DEFLECTION	0.9 mm

5	NYLOCK NUT	NYLOCK NUT GR. 8	11
4	BUSH	NATURAL RUBBER	11
3	PIN	EN-8D/15B25	11
2	BUSH HALF	CI IS-210 Gr.FG-260	1
1	PIN HALF	CI IS-210 Gr.FG-260	1
SR NO	DESCRIPTION	MATERIAL	QTY

REV.	DMRN NO.	DESCRIPTION	REV. BY	APPD. BY	DATE

TITLE: **RB-360-11 /----- CPLG.**

MATERIAL: REFER TABLE

CUSTOMER NAME:

SCALE: NTS REF. No.: -

RATHI RATHI TRANSPower PVT LTD PUNE 411014

DRG. No.: -

This drawing / information / design is the property of Rathi Transpower Pvt. Ltd. It is confidential & must not be made public or copied without prior written authorization & is subjected to recall at any time. Acceptance of this drawing constitutes full agreement with these conditions

J I H G F E D C B A

8

7

6

5

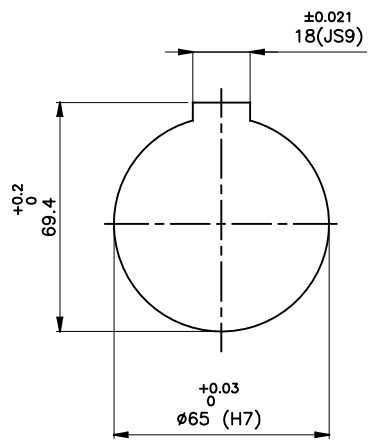
4

3

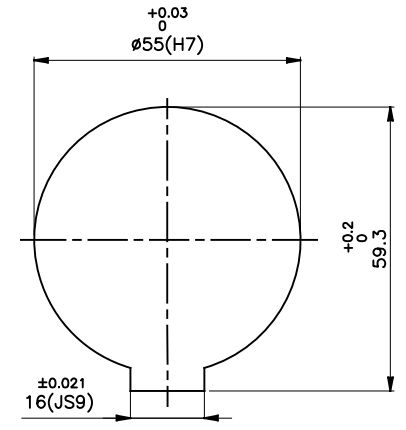
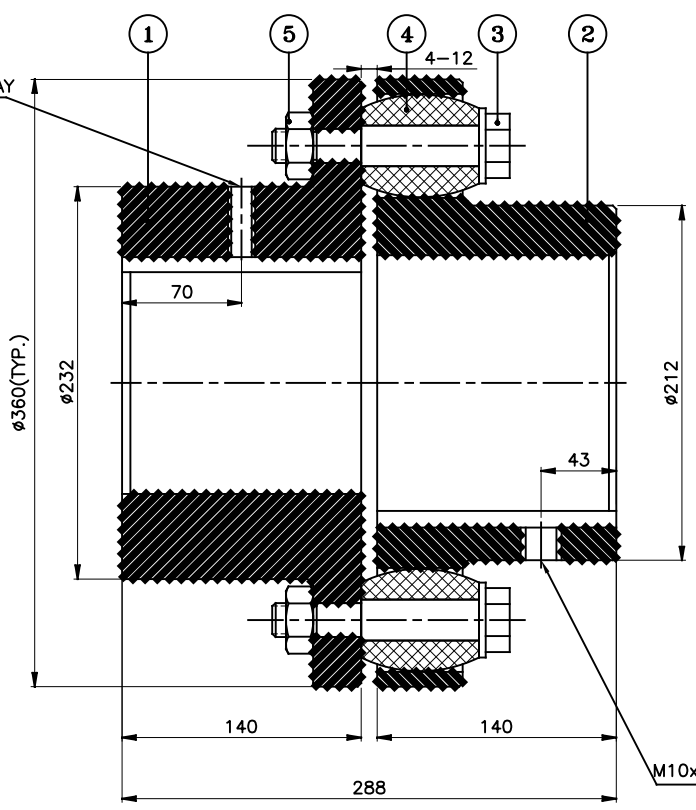
2

1

24



DRIVE END



DRIVEN END

APPLICATION DETAILS

APPLICATION	-
RATED POWER	-
RATED SPEED	-
RATED TORQUE	-
A.S.F.	-

COUPLING SPECIFICATIONS

COUPLING RATING	139.5 kW @ 100 RPM
RATED TORQUE	13.31 kNm.
PEAK TORQUE	26.92 kNm.
MAX. SPEED	1900 rpm.
MAX. BORE	PIN HALF 150 mm BUSH HALF 135 mm
WEIGHT (Approx.)	1000 kg
INERTIA (WK ²)	1.40 kgm ²

COUPLING HUBS DYNAMICALLY BALANCED TO GR. 6.3 AS PER ISO: 1940-1.

MAX. MISALIGNMENTS

AXIAL DEFLECTION	±4 mm.
ANGULAR DEFLECTION	1°
RADIAL DEFLECTION	0.9 mm

5	NYLOCK NUT	HIGH TENSILE STEEL	11
4	BUSH	POLYURETHANE	11
3	PIN	EN-8D/15B25	11
2	BUSH HALF	CI IS-210 Gr.FG-260	1
1	PIN HALF	CI IS-210 Gr.FG-260	1
SR NO	DESCRIPTION	MATERIAL	QTY

REV.	DMRN NO.	DESCRIPTION	REV. BY	APPD. BY	DATE

TITLE: **RB-360-11 /----- CPLG.**

MATERIAL: REFER TABLE

CUSTOMER NAME:

SCALE: NTS REF. No.: -

RATHI RATHI TRANSPOWER PVT LTD PUNE 411014

DRG. No.: -

This drawing / information / design is the property of Rathi Transpower Pvt. Ltd. It is confidential & must not be made public or copied without prior written authorization & is subjected to recall at any time. Acceptance of this drawing constitutes full agreement with these conditions